

Flexible compensation unit series FOUK-HT

ZG12



HT - ZG12

Serial No.

Specific model

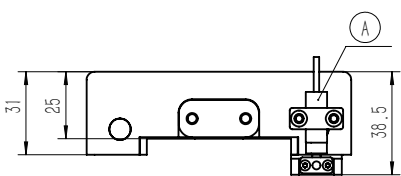
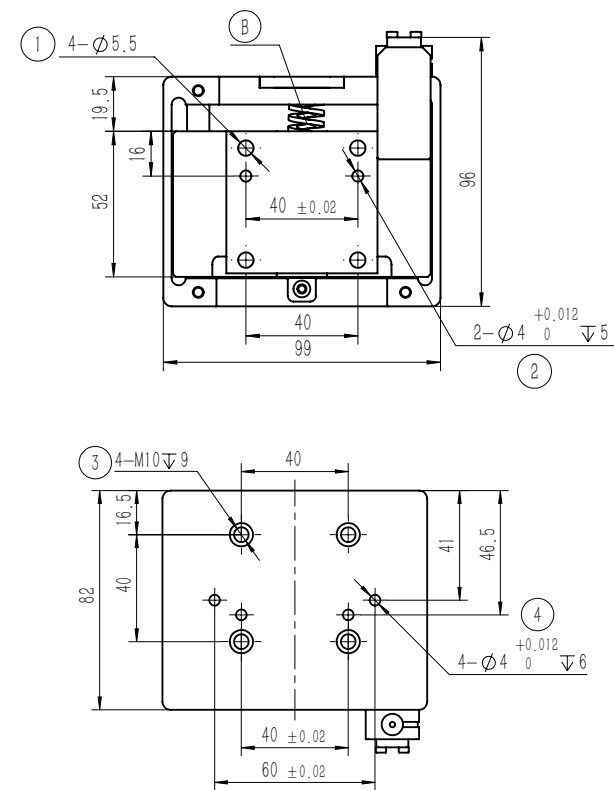
HT Flexible unit compensation

Inductive proximity sensor

IPSD-2NS-0823-L3	Inductive, NPN, 3-core3m
IPSD-2PS-0823-L3	Inductive, PNP, 3-core3m

Product attributes	HT-ZG12	HT-ZG25	HT-ZG32	HT-ZG40	HT-HE40	HT-HE50	Unit
Supporting products	TG12-FZ34/FR28 TG25-FZ42/FR36 TG32-FZ55/FR45 TG40-FZ70/FR57 TE40-FR36-96 TE50-FR45-120						
Guide pattern	Linear bearing	Linear bearing	Linear bearing	Linear bearing	Linear slide rail	Linear slide rail	
Weight	0.65	1.85	2.3	4.3	2.9	4.6	kg
Sensing stroke range	6~9	7~11	7~11	8~12	7~10	8~12	mm
Spring thrust range	3~8	5~14	8~20	10~25	6~16	8~20	kgf
Spring type	Rectangular/circularsection	Rectangular/circularsection	Rectangular/circularsection	Rectangular/circularsection	Rectangular/circularsection	Rectangular/circularsection	

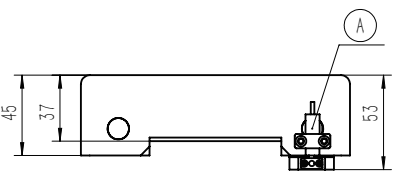
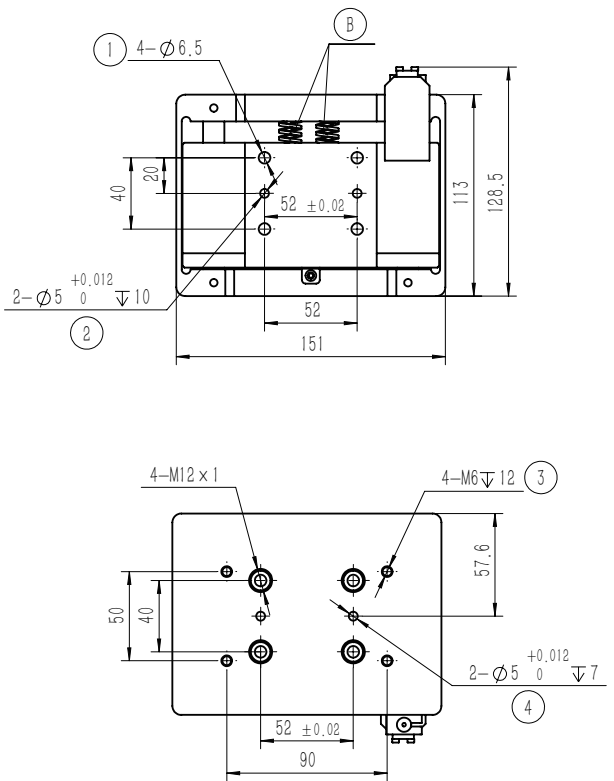
HT-ZG12



- ① Through hole for mounting gripper
- ② Positioning for mounting gripper
- ③ Threaded hole for mounting truss
- ④ Positioning for mounting truss
- A Pushing test
- B Thrust spring

Note: The standard version of the product does not include the sensor, which is an optional item.

HT-ZG25

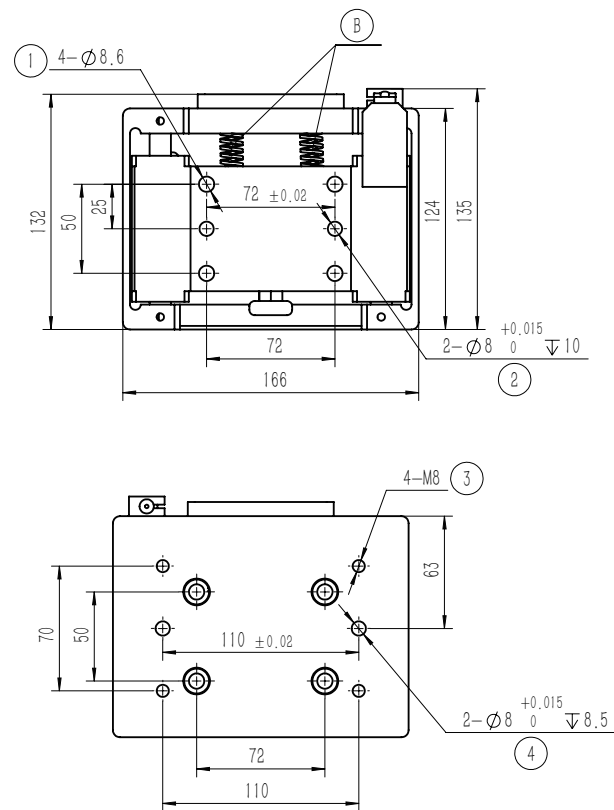


- ① Through hole for mounting gripper
- ② Positioning for mounting gripper
- ③ Threaded hole for mounting truss
- ④ Positioning for mounting truss
- A Pushing test
- B Thrust spring

Note: The standard version of the product does not include the sensor, which is an optional item.

Flexible compensation unit series FOUK-HT

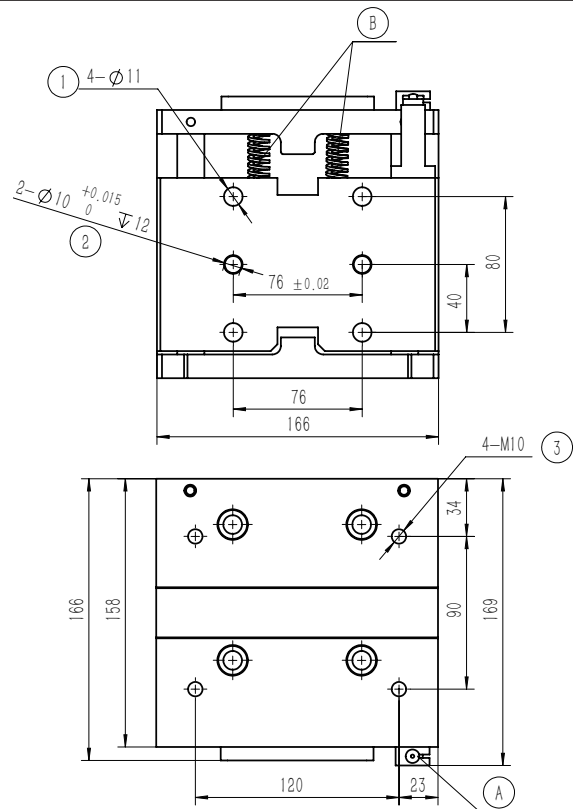
HT-ZG32



- 1 Through hole for mounting gripper
- 2 Positioning for mounting gripper
- 3 Threaded hole for mounting truss
- 4 Positioning for mounting truss
- A Pushing test
- B Thrust spring

Note: The standard version of the product does not include the sensor, which is an optional item.

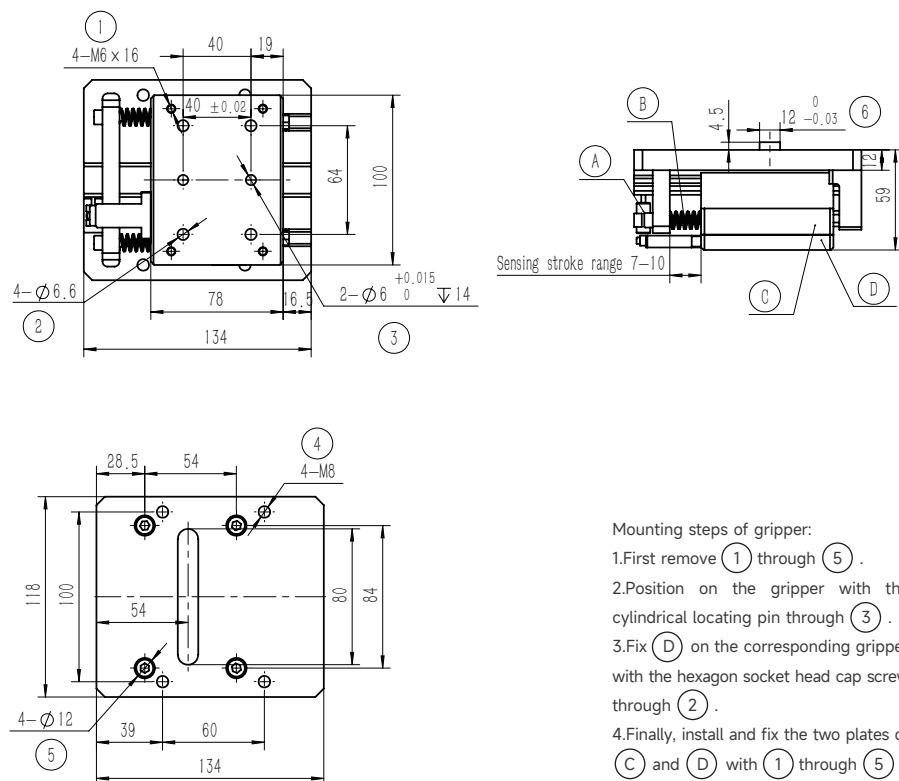
HT-ZG40



- 1 Through hole for mounting gripper
- 2 Positioning for mounting gripper
- 3 Threaded hole for mounting truss
- 4 Positioning for mounting truss
- A Pushing test
- B Thrust spring

Note: The standard version of the product does not include the sensor, which is an optional item.

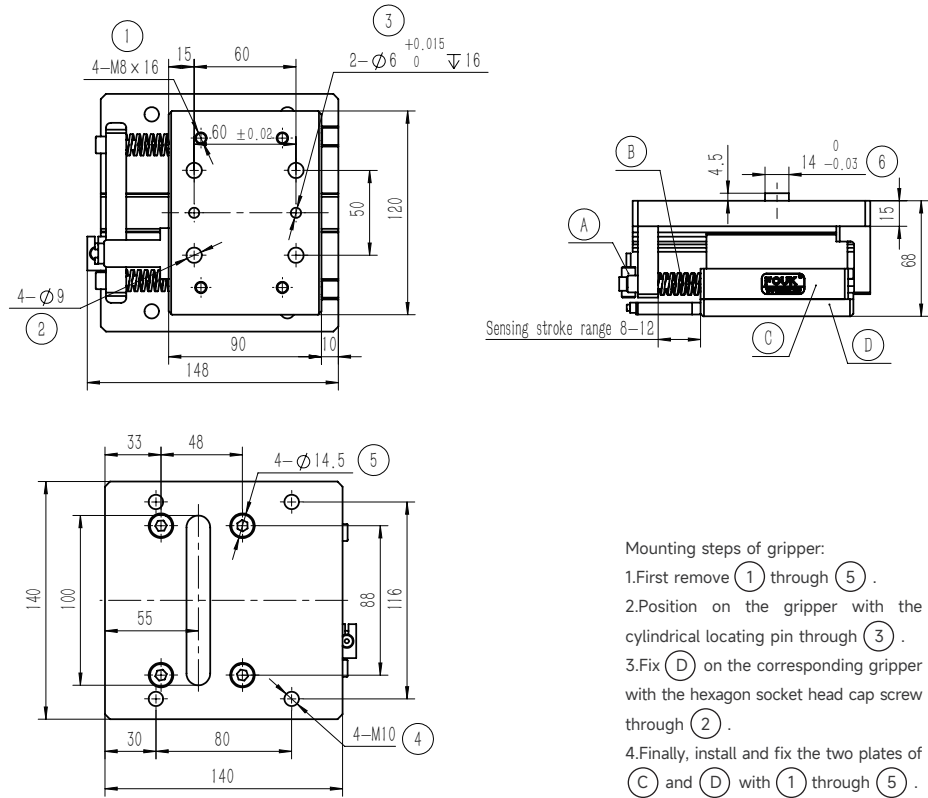
HT-HE40



Mounting steps of gripper:
1.First remove 1 through 5 .
2.Position on the gripper with the cylindrical locating pin through 3 .
3.Fix D on the corresponding gripper with the hexagon socket head cap screw through 2 .
4.Finally, install and fix the two plates of C and D with 1 through 5 .

- 1 Hexagon socket head cap screw (standard)
- 2 Through hole for mounting gripper
- 3 Positioning for mounting gripper
- 4 Threaded hole for mounting truss
- 5 Avoidance hole
- 6 Positioning guide strip
- A Pushing test
- B Pushing spring
- C Slider assembly
- D Rotary connecting plate

HT-HE50



Mounting steps of gripper:
1.First remove 1 through 5 .
2.Position on the gripper with the cylindrical locating pin through 3 .
3.Fix D on the corresponding gripper with the hexagon socket head cap screw through 2 .
4.Finally, install and fix the two plates of C and D with 1 through 5 .

- 1 Hexagon socket head cap screw (standard)
- 2 Through hole for mounting gripper
- 3 Positioning for mounting gripper
- 4 Threaded hole for mounting truss
- 5 Avoidance hole
- 6 Positioning guide strip
- A Pushing test
- B Pushing spring
- C Slider assembly
- D Rotary connecting plate