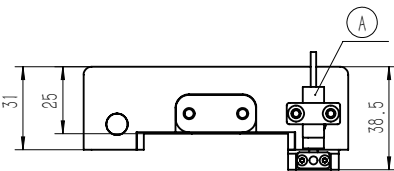
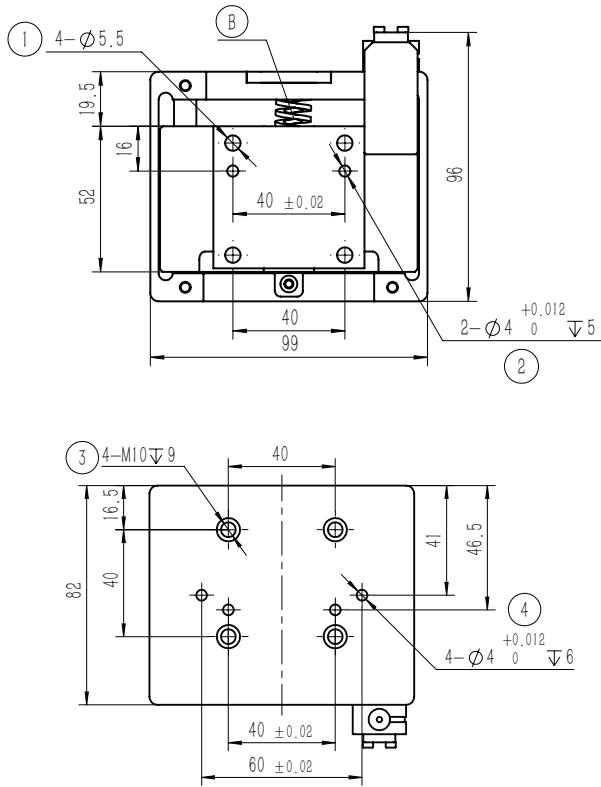


Flexible compensation unit series FOUK-HT

HT-ZG12

ZG12



- ① Through hole for mounting gripper
- ② Positioning for mounting gripper
- ③ Threaded hole for mounting truss
- ④ Positioning for mounting truss
- A Pushing test
- B Thrust spring

Note: The standard version of the product does not include the sensor, which is an optional item.

HT - ZG12

Serial No.

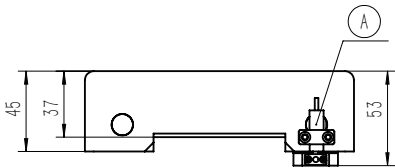
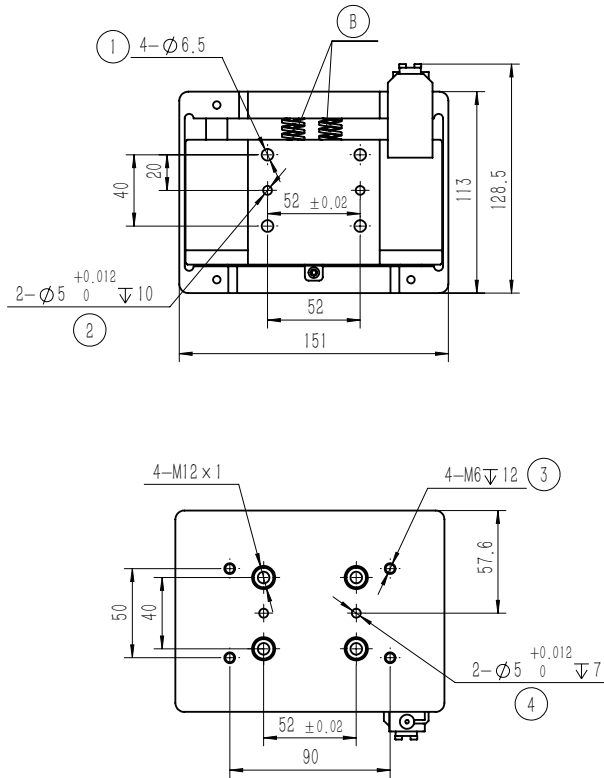
Specific model

HT Flexible unit compensation

Inductive proximity sensor

IPSD-2NS-0823-L3	Inductive, NPN, 3-core3m
IPSD-2PS-0823-L3	Inductive, PNP, 3-core3m

HT-ZG25



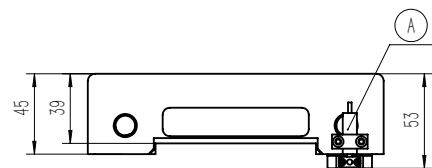
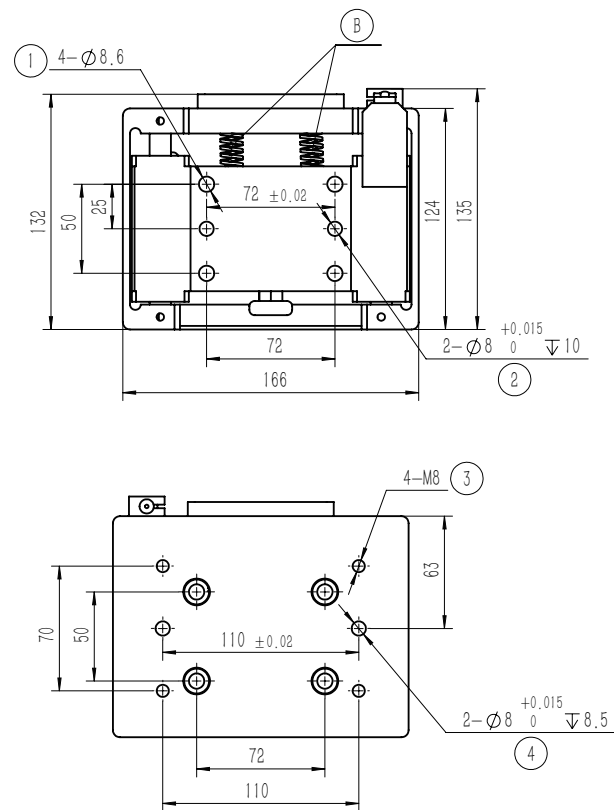
- ① Through hole for mounting gripper
- ② Positioning for mounting gripper
- ③ Threaded hole for mounting truss
- ④ Positioning for mounting truss
- A Pushing test
- B Thrust spring

Note: The standard version of the product does not include the sensor, which is an optional item.

Product attributes	HT-ZG12	HT-ZG25	HT-ZG32	HT-ZG40	HT-HE40	HT-HE50	Unit
Supporting products	TG12-FZ34/FR28	TG25-FZ42/FR36	TG32-FZ55/FR45	TG40-FZ70/FR57	TE40-FR36-96	TE50-FR45-120	
Guide pattern	Linear bearing	Linear bearing	Linear bearing	Linear bearing	Linear slide rail	Linear slide rail	
Weight	0.65	1.85	2.3	4.3	2.9	4.6	kg
Sensing stroke range	6~9	7~11	7~11	8~12	7~10	8~12	mm
Spring thrust range	3~8	5~14	8~20	10~25	6~16	8~20	kgf
Spring type	Rectangular/circularsection	Rectangular/circularsection	Rectangular/circularsection	Rectangular/circularsection	Rectangular/circularsection	Rectangular/circularsection	

Flexible compensation unit series FOUK-HT

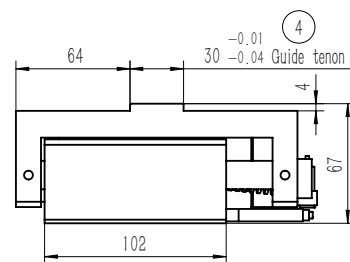
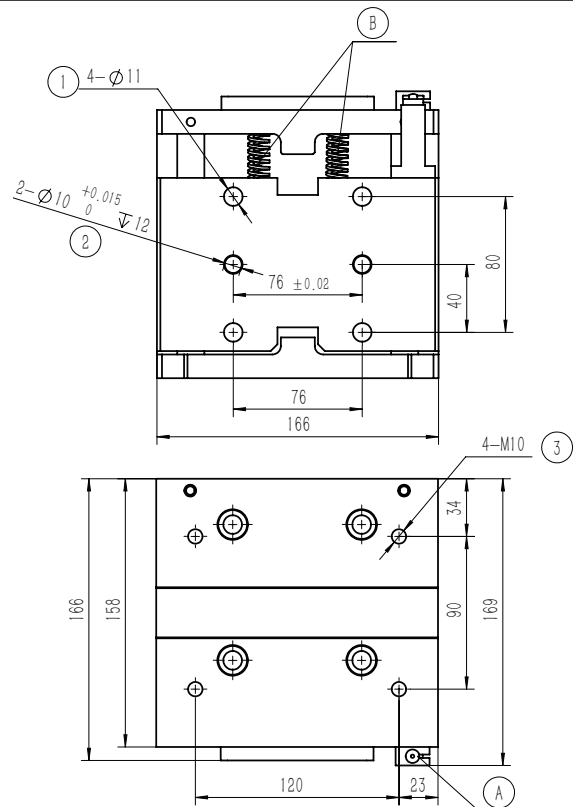
HT-ZG32



- ① Through hole for mounting gripper
- ② Positioning for mounting gripper
- ③ Threaded hole for mounting truss
- ④ Positioning for mounting truss
- A Pushing test
- B Thrust spring

Note: The standard version of the product does not include the sensor, which is an optional item.

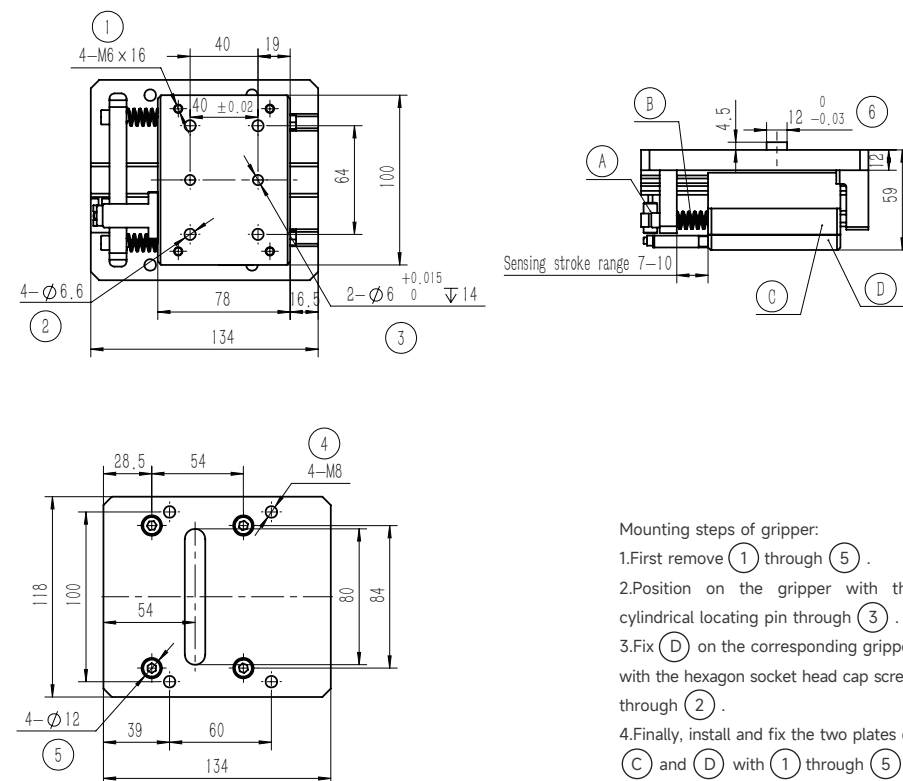
HT-ZG40



- ① Through hole for mounting gripper
- ② Positioning for mounting gripper
- ③ Threaded hole for mounting truss
- ④ Positioning for mounting truss
- A Pushing test
- B Thrust spring

Note: The standard version of the product does not include the sensor, which is an optional item.

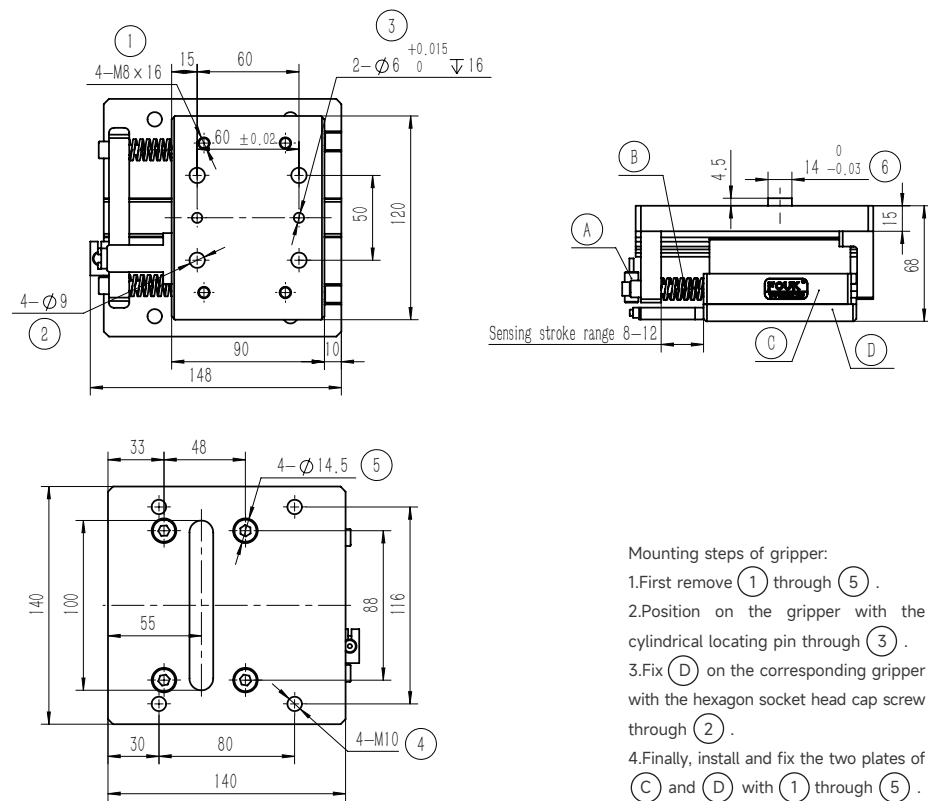
HT-HE40



- Mounting steps of gripper:
1. First remove ① through ⑤.
  2. Position on the gripper with the cylindrical locating pin through ③.
  3. Fix ④ on the corresponding gripper with the hexagon socket head cap screw through ②.
  4. Finally, install and fix the two plates of ⑥ and ⑦ with ① through ⑤.

- ① Hexagon socket head cap screw (standard)
- ② Through hole for mounting gripper
- ③ Positioning for mounting gripper
- ④ Threaded hole for mounting truss
- ⑤ Avoidance hole
- ⑥ Positioning guide strip
- A Pushing test
- B Pushing spring
- C Slider assembly
- D Rotary connecting plate

HT-HE50



- Mounting steps of gripper:
1. First remove ① through ⑤.
  2. Position on the gripper with the cylindrical locating pin through ③.
  3. Fix ④ on the corresponding gripper with the hexagon socket head cap screw through ②.
  4. Finally, install and fix the two plates of ⑥ and ⑦ with ① through ⑤.

- ① Hexagon socket head cap screw (standard)
- ② Through hole for mounting gripper
- ③ Positioning for mounting gripper
- ④ Threaded hole for mounting truss
- ⑤ Avoidance hole
- ⑥ Positioning guide strip
- A Pushing test
- B Pushing spring
- C Slider assembly
- D Rotary connecting plate