

Truss System Disc-type Gripping Unit Series FOUK-TG

FZ70-125

TG40



TG 40 - FZ70 - 125 - 0° - ZG40

| | | | | | | | | | |
|------------|--|---------------|--|------------------------------|--|-----------------------|--|-------------------------------|--|
| Serial No. | | Cylinder bore | | Model of finger cylinder | | Standard installation | | Flexible compensation unit | |
| FZ | | Gripping unit | | Toothed three-finger gripper | | FZ70-125 | | 0° | |
| | | | | Toothed parallel gripper | | FR57-151 | | Three-finger flip | |
| | | | | | | | | 180° | |
| | | | | | | | | Two-finger flip | |
| | | | | | | | | 90° | |
| | | | | | | No characters | | Without flexible compensation | |

| | | | | | | | | | | | |
|----------------------------|--|------------------|--|----------------------------|--|----------|--|---------------------------|--|--------------------------|--|
| Inductive proximity sensor | | | | Inductive proximity sensor | | | | Magnetic proximity sensor | | | |
| Used | | IPSD-2NS-0823-L3 | | Inductive, NPN, 3-core3m | | Used for | | IPSD-2NS-0823-L3 | | Inductive, NPN, 3-core3m | |
| for TG | | IPSD-2PS-0823-L3 | | Inductive, PNP, 3-core3m | | gripper | | IPSD-2PS-0823-L3 | | Inductive, PNP, 3-core3m | |
| | | | | | | | | D-M9NAL | | Magnetic, NPN, 3-core3m | |
| | | | | | | | | D-M9PAL | | Magnetic, PNP, 3-core3m | |

*It is recommended to use two sensors for each rotating unit, and it is recommended to use two sensors for each gripper. For details, see the sensor appendix.

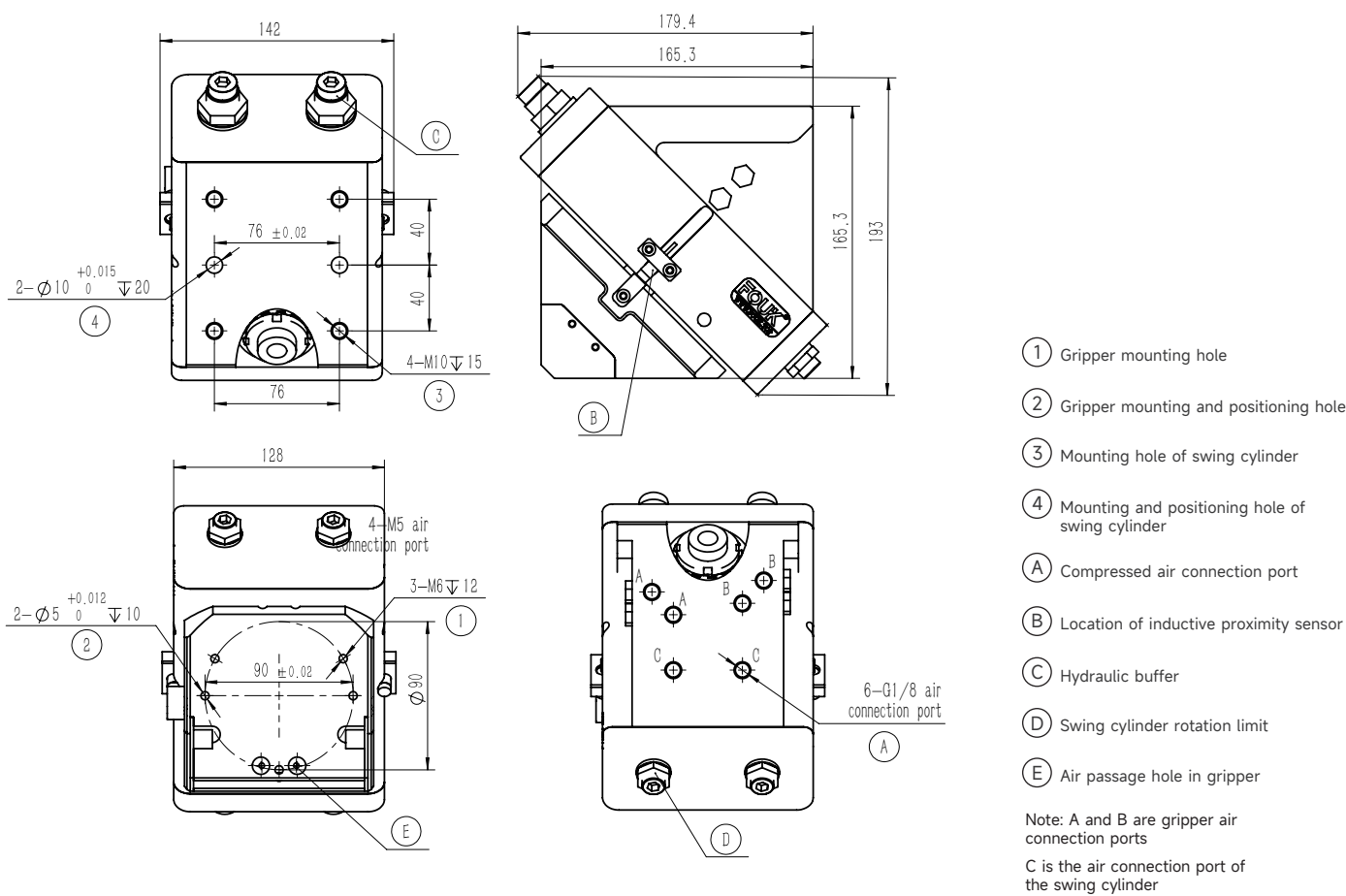
| Product attributes | TG40 | Unit |
|---|----------------------|------|
| Theoretical torque | 3.7 × P | N·m |
| Suitable Workpiece Load for Single-Side Finger Cylinder | 6.5 | kg |
| Maximum working load of single-side finger cylinder | 8 | kg |
| Product weight | 9.9 | kg |
| Rotation time | 1~1.5 | sec |
| Specification of buffer unit | M20 Hydraulic buffer | |
| Repeated positioning accuracy | ± 0.05 | mm |
| Operating air pressure | 3~8 | bar |
| Air connection port of air distribution pipe | G1/8 | |
| Operating temperature range | -5~60 | °C |
| IP rating | 65 | |

| Product attributes | Parameter Value | Unit |
|---|-----------------|------|
| Single stroke | 10 | mm |
| Product weight | 1.6 | kg |
| Maximum allowable gripping distance | 145 | mm |
| Specification of air connection port | G1/8 | |
| Theoretical maximum gripping force: opening/closing | 310P/280P | N |
| Opening/closing time | 0.1/0.1 | s |
| Repeated gripping accuracy | ± 0.02 | mm |
| Operating air pressure range | 3~8 | bar |
| Temperature range of application | -5~60 | °C |
| IP rating | 40 | |

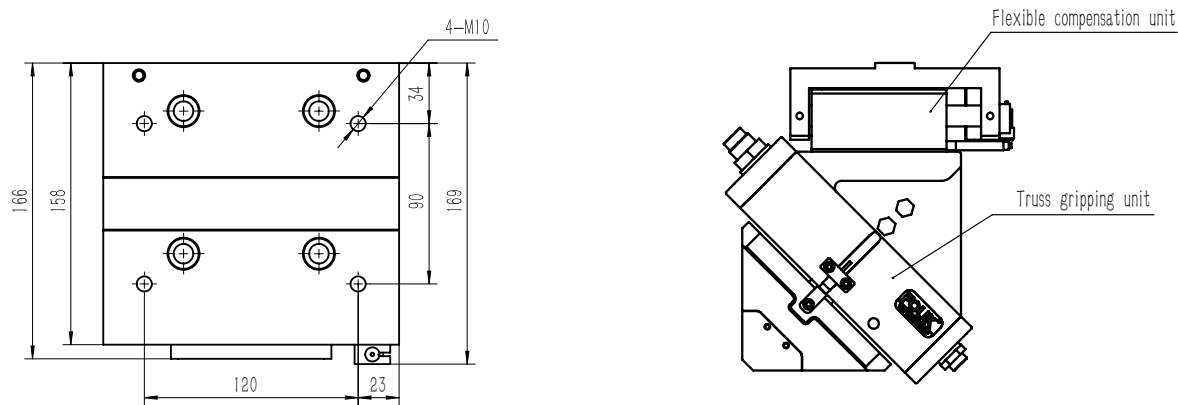
FR57-151

| Product attributes | Parameter Value | Unit |
|---|-----------------|------|
| Single stroke | 13 | mm |
| Product weight | 1.45 | kg |
| Maximum allowable gripping distance | 160 | mm |
| Specification of air connection port | G1/8 | |
| Theoretical maximum gripping force: opening/closing | 214P/198P | N |
| Opening/closing time | 0.09/0.09 | s |
| Repeated gripping accuracy | ± 0.02 | mm |
| Operating air pressure range | 3~8 | bar |
| Temperature range of application | -5~60 | °C |
| IP rating | 40 | |

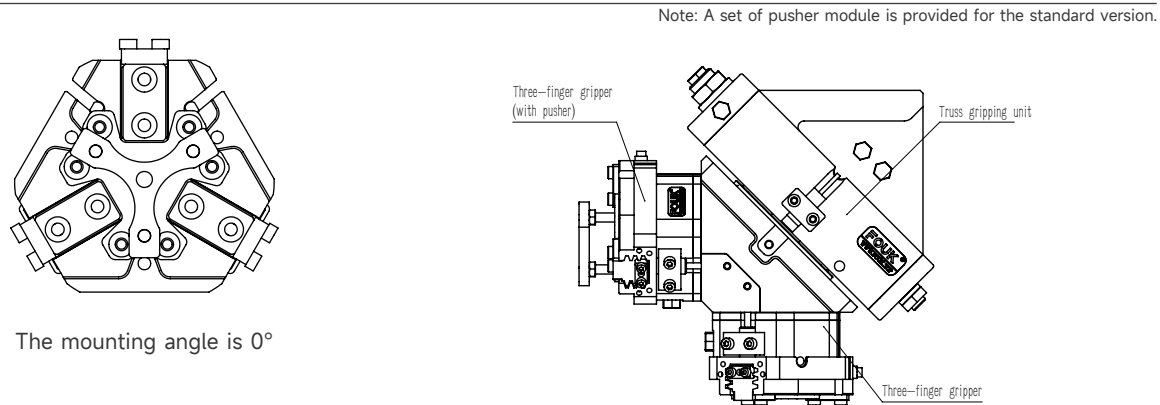
TG40



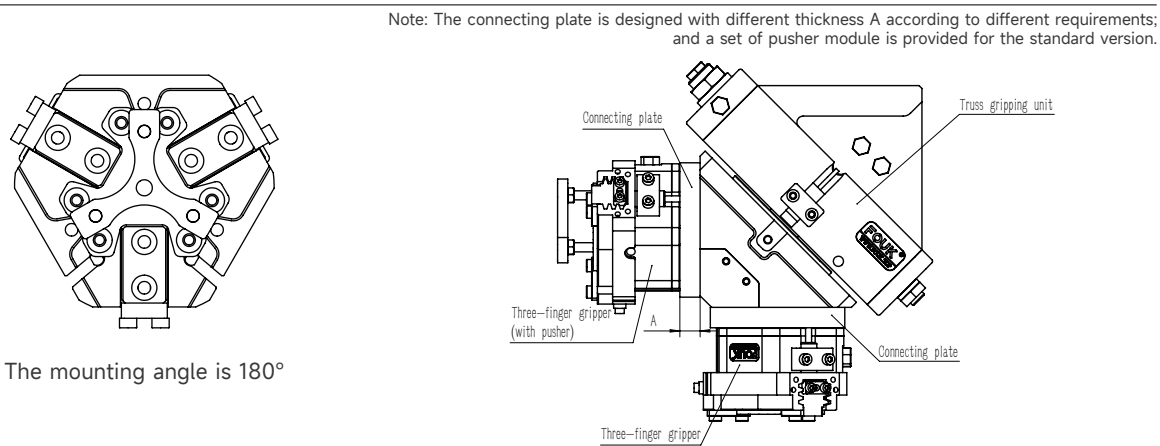
TG40-ZG40



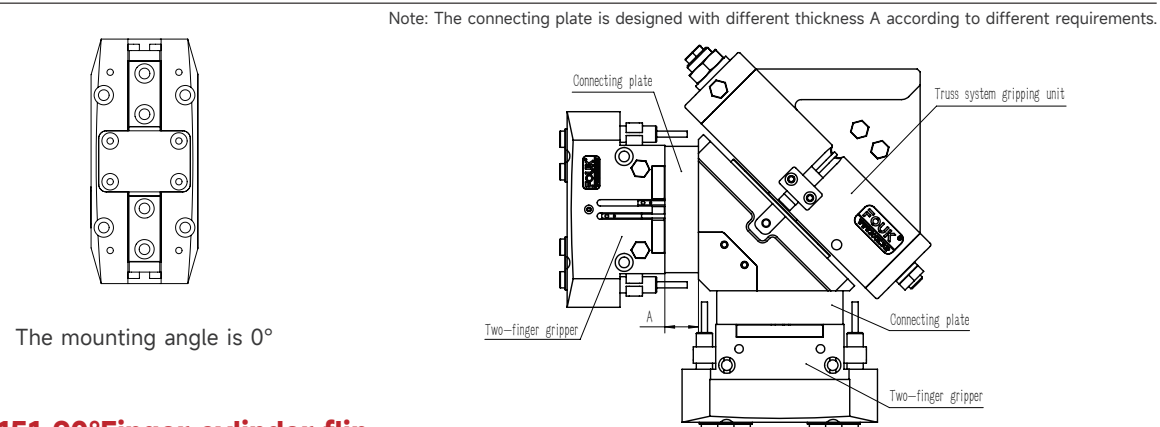
TG40-FZ70-125-0°Standard installation



TG40-FZ70-125-180°Finger cylinder flip



TG40-FR57-151-0°Standard installation



TG40-FR57-151-90°Finger cylinder flip

