

Truss System Disc-type Gripping Unit Series FOUK-TG

FZ55-100

TG32



TG

32

-

FZ55

-

100

-

0°

-

ZG32

Serial No.

Cylinder bore

Model of finger cylinder

Standard installation

Flexible compensation unit

FZ

Gripping unit

Toothed three-finger gripper

FZ55-100

Toothed parallel gripper

FR45-120

Three-finger flip

180°

Two-finger flip

90°

No characters

Without flexible compensation

Inductive proximity sensor

Inductive proximity sensor

Magnetic proximity sensor

Used for TG

IPSD-2NS-0823-L3

Inductive, NPN, 3-core3m

Used for gripper

IPSD-2NS-0823-L3

Inductive, NPN, 3-core3m

D-M9NAL

Magnetic, NPN, 3-core3m

IPSD-2PS-0823-L3

Inductive, PNP, 3-core3m

D-M9PAL

Magnetic, PNP, 3-core3m

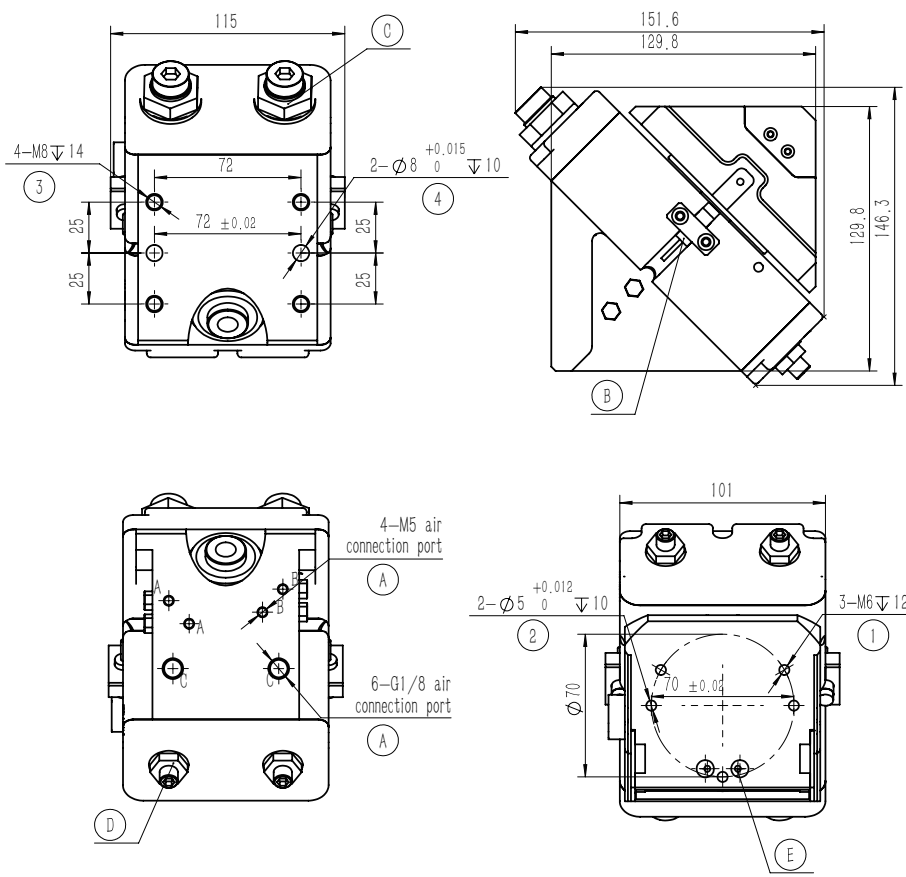
*It is recommended to use two sensors for each rotating unit, and it is recommended to use two sensors for each gripper. For details, see the sensor appendix.

Product attributes	TG32	Unit
Theoretical torque	2.1 × P	N·m
Suitable Workpiece Load for Single-Side Finger Cylinder	3	kg
Maximum working load of single-side finger cylinder	4	kg
Product weight	4.8	kg
Rotation time	0.5~1.2	sec
Specification of buffer unit	M20 Hydraulic buffer	
Repeated positioning accuracy	± 0.05	mm
Operating air pressure	3~8	bar
Air connection port of air distribution pipe	G1/8+M5	
Operating temperature range	-5~60	°C
IP rating	65	

Product attributes	Parameter Value	Unit
Single stroke	8	mm
Product weight	0.87	kg
Maximum allowable gripping distance	110	mm
Specification of air connection port	M5	
Theoretical maximum gripping force: opening/closing	198P/172P	N
Opening/closing time	0.05/0.05	s
Repeated gripping accuracy	± 0.02	mm
Operating air pressure range	3~8	bar
Temperature range of application	-5~60	°C
IP rating	40	

Product attributes	Parameter Value	Unit
Single stroke	10	mm
Product weight	0.9	kg
Maximum allowable gripping distance	140	mm
Specification of air connection port	G1/8	
Theoretical maximum gripping force: opening/closing	138P/124P	N
Opening/closing time	0.06/0.06	s
Repeated gripping accuracy	± 0.02	mm
Operating air pressure range	3~8	bar
Temperature range of application	-5~60	°C
IP rating	40	

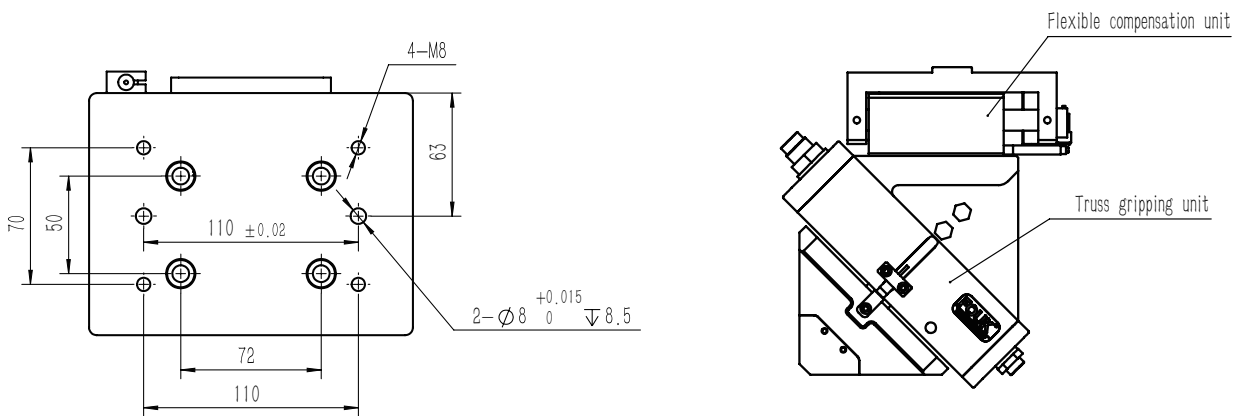
TG32



- ① Gripper mounting hole
- ② Gripper mounting and positioning hole
- ③ Mounting hole of swing cylinder
- ④ Mounting and positioning hole of swing cylinder
- A Compressed air connection port
- B Location of inductive proximity sensor
- C Hydraulic buffer
- D Swing cylinder rotation limit
- E Air passage hole in gripper

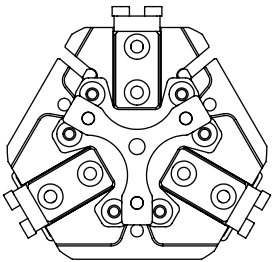
Note: A and B are gripper air connection ports
C is the air connection port of the swing cylinder

TG32-ZG32

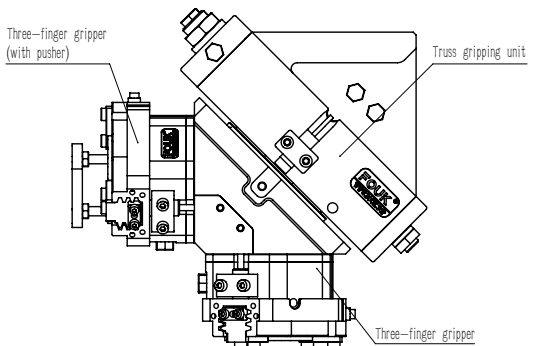


TG32-FZ55-100-0°Standard installation

Note: A set of pusher module is provided for the standard version.

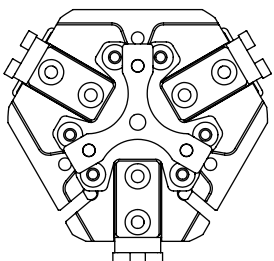


The mounting angle is 0°

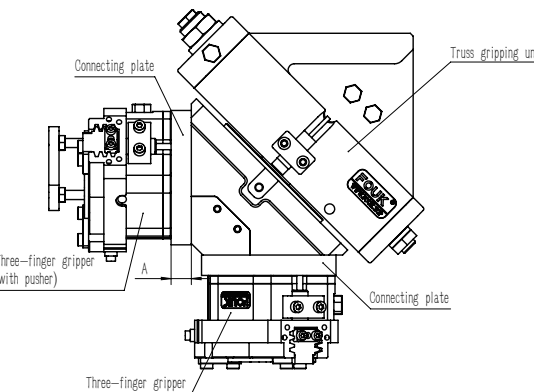


TG32-FZ55-100-180°Finger cylinder flip

Note: The connecting plate is designed with different thickness A according to different requirements; and a set of pusher module is provided for the standard version.

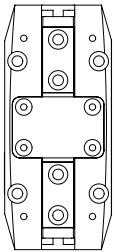


The mounting angle is 180°

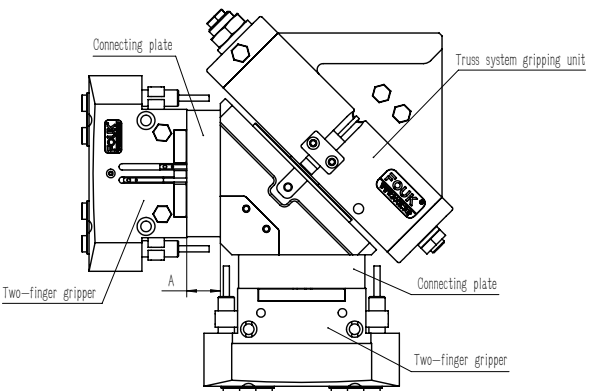


TG32-FR45-120-0°Standard installation

Note: The connecting plate is designed with different thickness A according to different requirements.

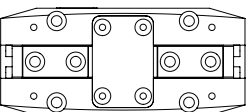


The mounting angle is 0°



TG32-FR45-120-90°Finger cylinder flip

Note: The connecting plate is designed with different thickness A according to different requirements.



The mounting angle is 90°

