

Truss System Disc-type Gripping Unit Series FOUK-TG

FZ42-78

TG25



TG

25

-

FZ42

-

78

-

0°

-

ZG25

Serial No.

Cylinder bore

Model of finger cylinder

Standard installation

0°

Flexible compensation unit

No characters

Without flexible compensation

FZ

Gripping unit

Toothed three-finger gripper

FZ42-78

Toothed parallel gripper

FR36-96

Inductive proximity sensor

Used for TG

IPSD-2NS-0823-L3

Inductive, NPN, 3-core3m

IPSD-2PS-0823-L3

Inductive, PNP, 3-core3m

Inductive proximity sensor

Used for gripper

IPSD-2NS-0823-L3

Inductive, NPN, 3-core3m

IPSD-2PS-0823-L3

Inductive, PNP, 3-core3m

Magnetic proximity sensor

D-M9NAL

Magnetic, NPN, 3-core3m

D-M9PAL

Magnetic, PNP, 3-core3m

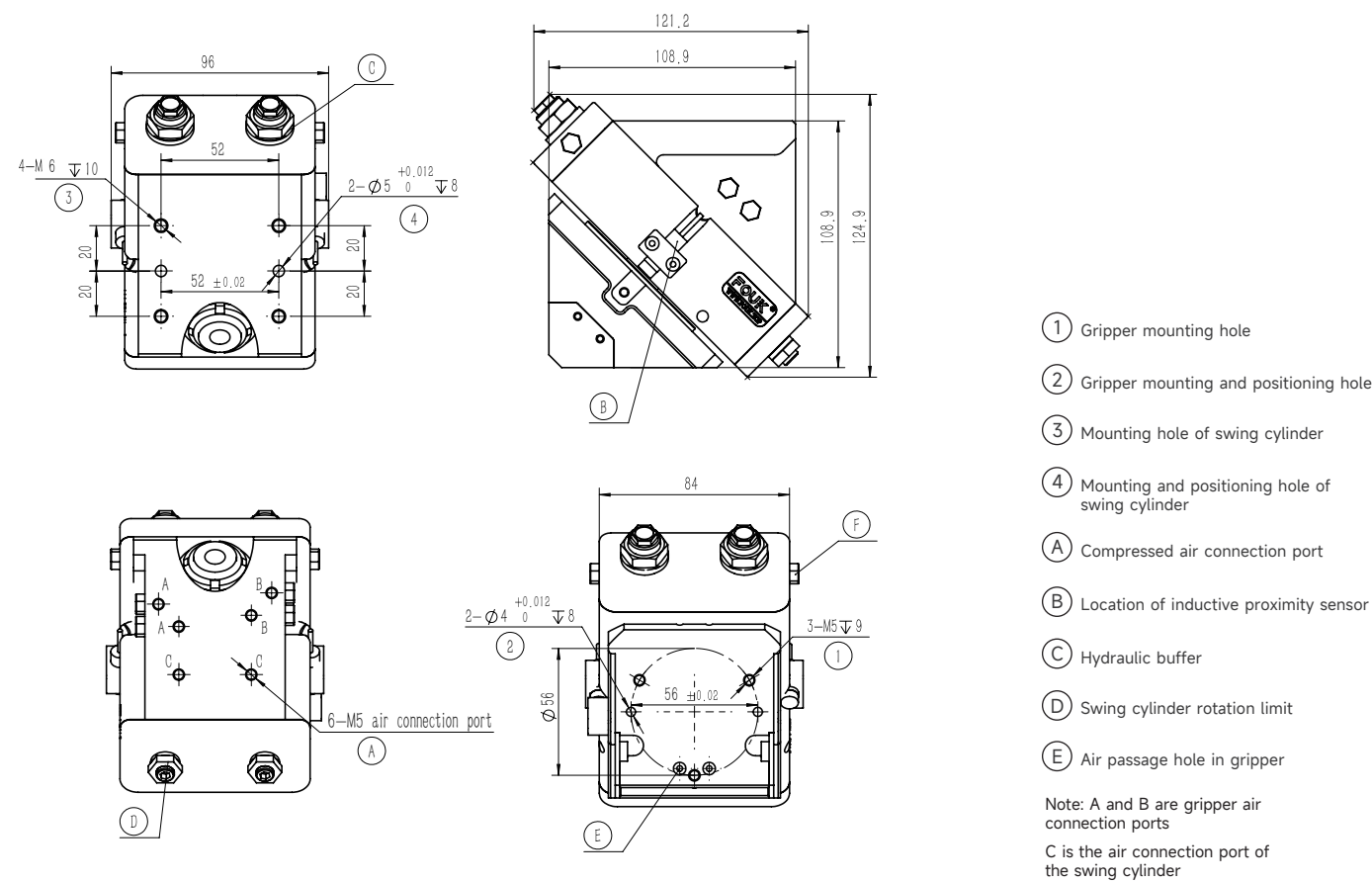
*It is recommended to use two sensors for each rotating unit, and it is recommended to use two sensors for each gripper. For details, see the sensor appendix.

Product attributes	TG25	Unit
Theoretical torque	0.96 × P	N·m
Suitable Workpiece Load for Single-Side Finger Cylinder	1.7	kg
Maximum working load of single-side finger cylinder	2	kg
Product weight	2.4	kg
Rotation time	0.4~1.1	sec
Specification of buffer unit	M14 Hydraulic buffer	
Repeated positioning accuracy	± 0.05	mm
Operating air pressure	3~8	bar
Air connection port of air distribution pipe	M5	
Operating temperature range	-5~60	°C
IP rating	65	

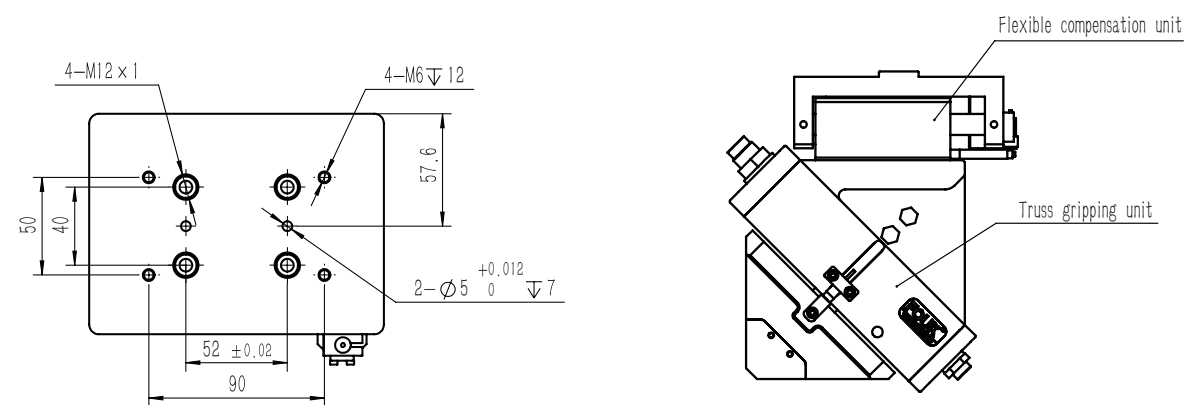
Product attributes	Parameter Value	Unit
Single stroke	6	mm
Product weight	0.51	kg
Maximum allowable gripping distance	90	mm
Specification of air connection port	M5	
Theoretical maximum gripping force: opening/closing	116P/106P	N
Opening/closing time	0.03/0.03	s
Repeated gripping accuracy	± 0.02	mm
Operating air pressure range	3~8	bar
Temperature range of application	-5~60	°C
IP rating	40	

Product attributes	Parameter Value	Unit
Single stroke	8	mm
Product weight	0.5	kg
Maximum allowable gripping distance	110	mm
Specification of air connection port	M5	
Theoretical maximum gripping force: opening/closing	100P/92P	N
Opening/closing time	0.035/0.035	s
Repeated gripping accuracy	± 0.02	mm
Operating air pressure range	3~8	bar
Temperature range of application	-5~60	°C
IP rating	40	

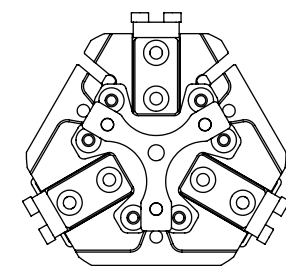
TG25



TG25-ZG25

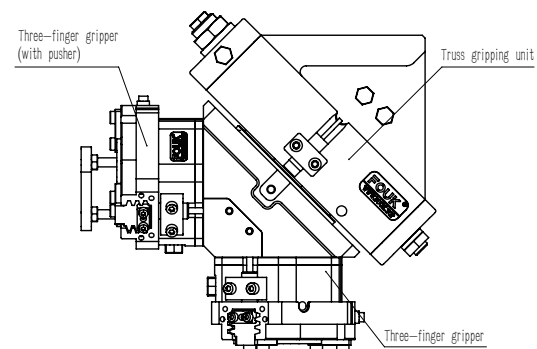


TG25-FZ42-78-0°Standard installation



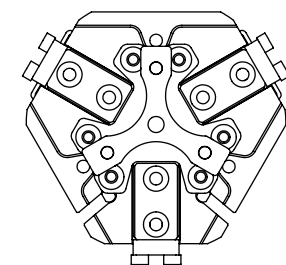
The mounting angle is 0°

Note: A set of pusher module is provided for the standard version.

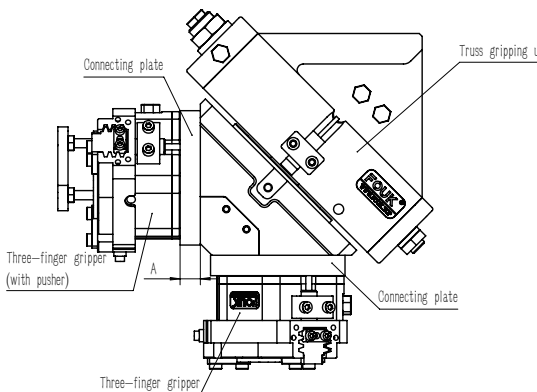


TG25-FZ42-78-180°Finger cylinder flip

Note: The connecting plate is designed with different thickness A according to different requirements; and a set of pusher module is provided for the standard version.

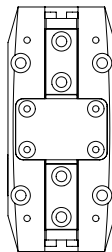


The mounting angle is 180°

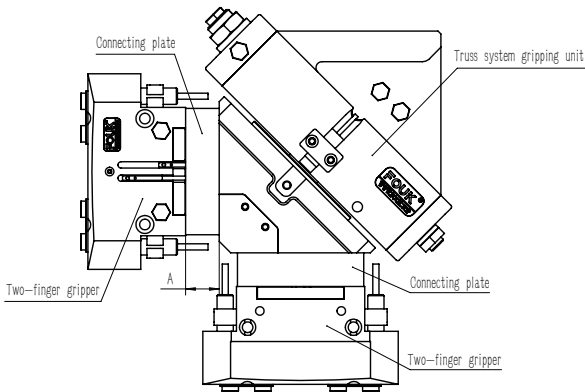


TG25-FR36-96-0°Standard installation

Note: The connecting plate is designed with different thickness A according to different requirements.

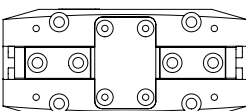


The mounting angle is 0°



TG25-FR36-96-90°Finger cylinder flip

Note: The connecting plate is designed with different thickness A according to different requirements.



The mounting angle is 90°

