

Truss System Disc-type Gripping Unit Series FOUK-TE

TE50

TE50



TE 50 - FR45 - 120 - 0° - HE50

Serial No.	Cylinder bore	Model of finger cylinder	Standard installation	Flexible compensation unit
TE	Flip unit		0°	
			Finger cylinder flip	90°
			No characters	Without flexible compensation

Inductive proximity sensor		Inductive proximity sensor		Magnetic proximity sensor	
Used for TG	IPSD-2NS-0823-L3	Inductive, NPN, 3-core3m	Used for gripper	IPSD-2NS-0823-L3	Inductive, NPN, 3-core3m
	IPSD-2PS-0823-L3	Inductive, PNP, 3-core3m		IPSD-2PS-0823-L3	Inductive, PNP, 3-core3m
				D-M9NAL	Magnetic, NPN, 3-core3m
				D-M9PAL	Magnetic, PNP, 3-core3m

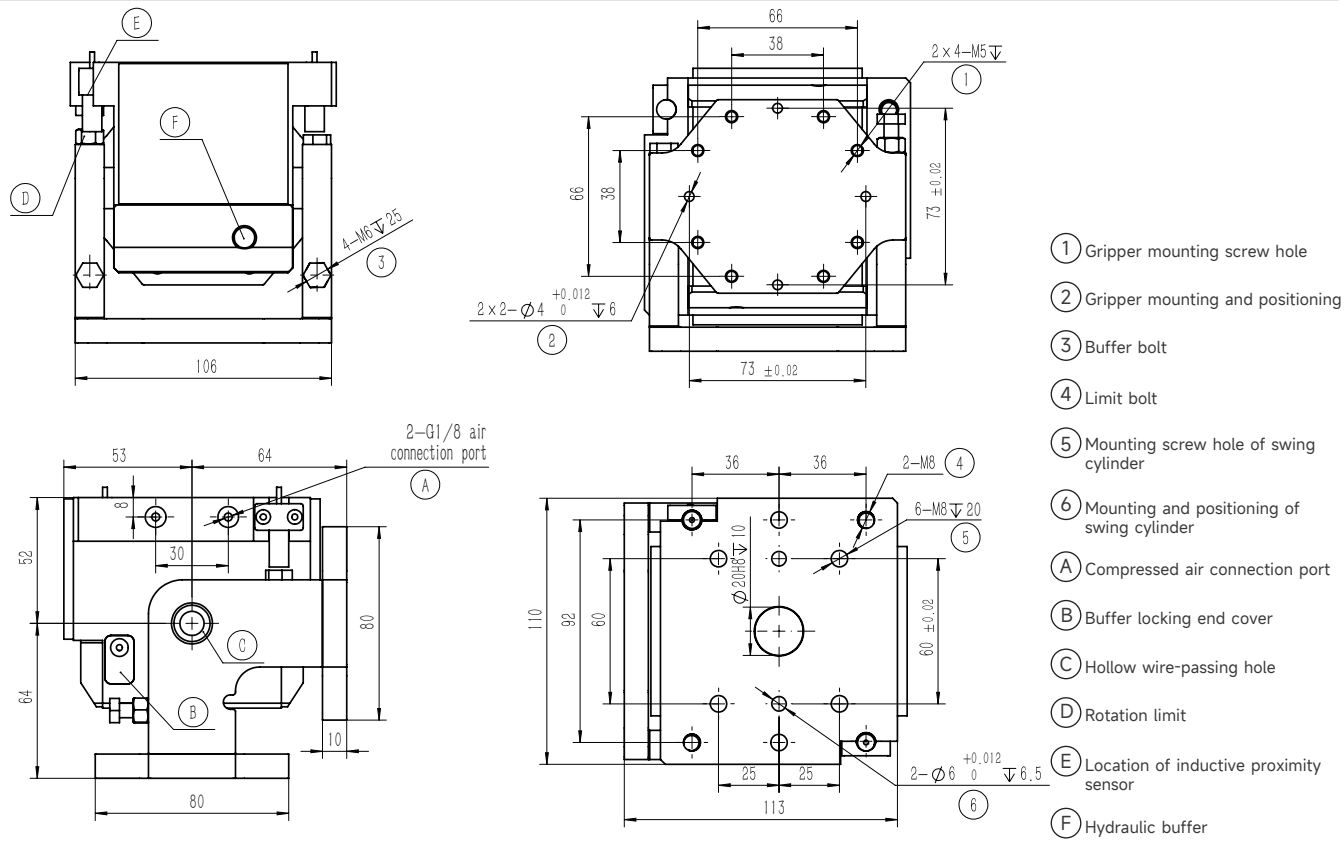
*It is recommended to use two sensors for each rotating unit, and it is recommended to use two sensors for each gripper. For details, see the sensor appendix.

TE50 Rotating unit

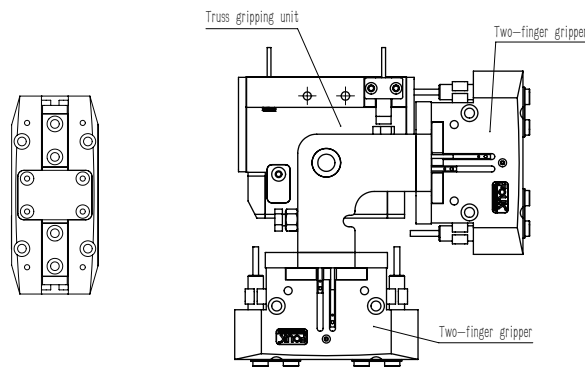
Product attributes	Parameter Value	Unit
Effective torque	3.8*P	N·m
Workpiece weight	3.5	kg
Product weight	4.2	kg
Rotation time	0.8~1.5	sec
Air connection port of air distribution pipe	G1/8	
Buffer unit	M14 × 1-12	
Repeated positioning accuracy	± 0.05	°
Operating air pressure	4~6	bar
Operating temperature range	-5~60	°C
IP rating	64	

FR45-120 Gripper

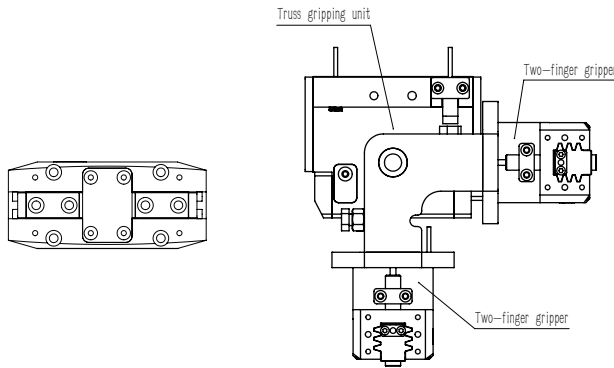
Product attributes	Parameter Value	Unit
Single stroke	10	mm
Product weight	0.9	kg
Maximum allowable gripping distance	140	mm
Specification of air connection port	G1/8	
Theoretical maximum gripping force: opening/closing	138P/124P	N
Opening/closing time	0.06/0.06	s
Repeated gripping accuracy	± 0.02	mm
Operating air pressure range	3~8	bar
Temperature range of application	-5~60	°C
IP rating	40	



TE50-FR45-120-0°Standard installation



TE50-FR45-120-90°Finger cylinder flip



TE50-HE50

