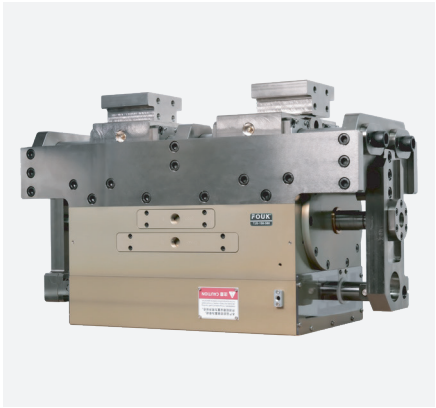


Shaft or slide rail bearing type gripper series FOUK-TJ

TJS-150-580

TJS-150-580



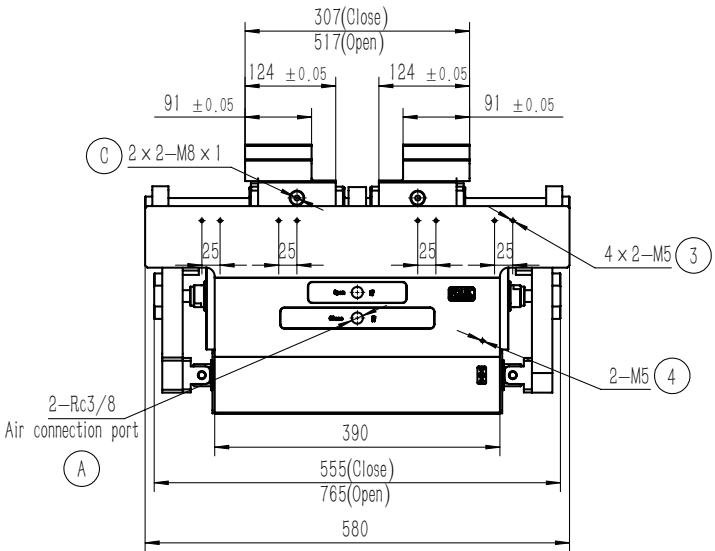
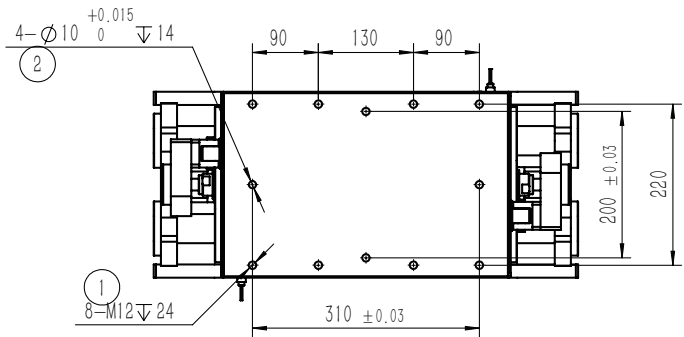
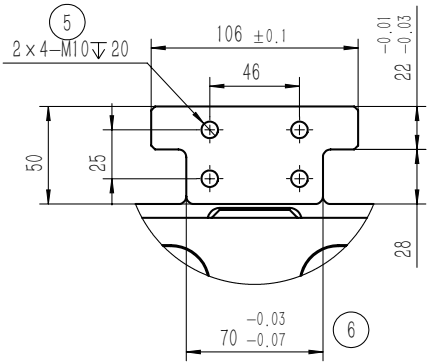
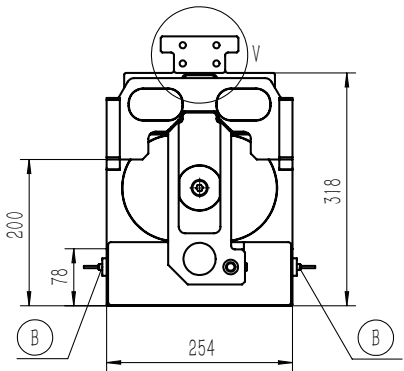
TJS 150 - 580

Serial No. Cylinder bore Maximum shell length

TJ Shaft or slide rail bearing

*For the model and quantity of optional sensors, please contact our sales department

Product attributes	Parameter Value	Unit
Product model	TJS-150-580	
Product weight	126	kg
Single stroke	105	mm
Operating air pressure	0.5~0.7	MPa
Operating temperature	-5~60	°C
Repeatability accuracy	± 0.15	mm
Maximum usage frequency	6	cpm
Maximum gripping force on both sides	20000	N
Specification of air connection port	Rc3/8	
Lubrication mode	Special grease	
Air consumption per single working cycle	45	L
Self-locking form (optional)	Normally closed	
Maximum allowable gripping distance	320	mm
Maximum static load Fz that can be withstood vertically	11000	N
Bearing bending moment Mx during operation	900	N.m
Bearing bending moment My during operation	2200	N.m
Bearing bending moment Mz during operation	600	N.m
Particle size of air dust during operation	<15	μ m
Operating air humidity	<50	%
Overall dimensions (length, width and height) of product	580*254*368	mm



- ① Bottom mounting hole
- ② Positioning for bottom mounting
- ③ Mounting hole reserved for proximity sensor
- ④ Self-locking air pipe access
- ⑤ Mounting hole of gripping finger
- ⑥ Installation and positioning of gripping finger
- A Compressed air connection port
- B Position of self-locking proximity sensor
- C Grease injection hole

Note:

When there is no air, the gripper maintains the self-locking state to prohibit the opening and closing actions.

When it is ventilated, the gripper releases the self-locking state to open and close.

This is a mechanical self-locking scheme, which is optional.

(When the self-locking sensor light is on, the self-locking is released)