

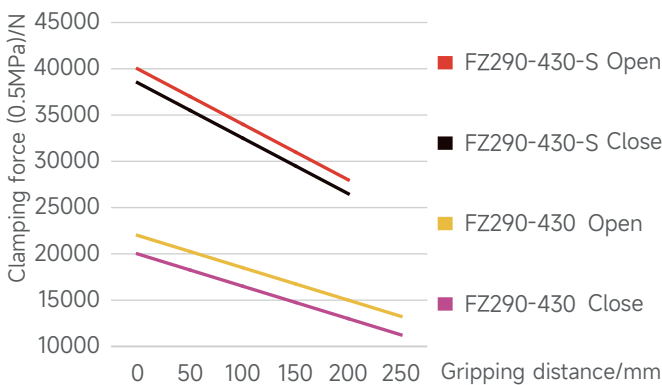
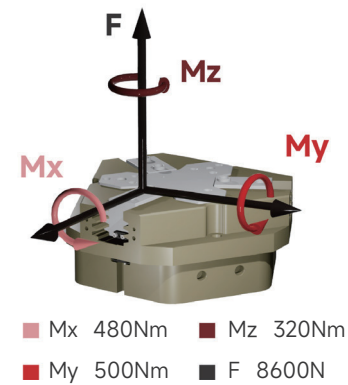
Toothed three-finger gripper series FOUK-FZ

FZ290-430-M/S

FZ290-430

Static load-bearing torque

Gripping force curve



FZ 290-430 - S - B - P - NO - H

Serial No.	Cylinder bore	Maximum shell diameter	Short stroke	Ventilation at bottom	Dust cover IP64	Self-locking form	High temperature resistance
FZ Toothed three-finger gripper			S Increased gripping force Standard version M	/ Ventilation on the side	/ Without dust cover	NO Self-locking by opening NC Self-locking by closing / Without self-locking	H -5~240°C / 0~60°C

Inductive proximity sensor

IPSD-2NS-0848-L3	Inductive, NPN, 3-core3m
IPSD-2PS-0848-L3	Inductive, PNP, 3-core3m

Magnetic proximity sensor

D-M9NAL	Magnetic, NPN, 3-core3m
D-M9PAL	Magnetic, PNP, 3-core3m

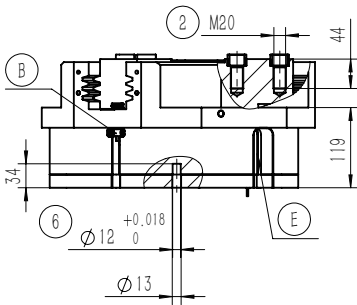
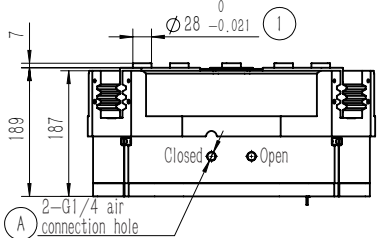
\*Two sensors are required for each gripper. For the detailed monitoring of two positions, see the sensor appendix.

Product attributes	FZ290-430	FZ290-430-NO	FZ290-430-NC	FZ290-430-S	FZ290-430-S-NO	FZ290-430-S-NC	Unit
Single stroke	45	45	45	26	26	26	mm
Product weight	70	94	81	72	96	83	kg
Maximum allowable gripping distance	260	260	260	210	210	210	mm
Theoretical maximum gripping force: opening/closing	4400P/4000P	4400P/-	-/4000P	8000P/7700P	8000P/-	-/7700P	N
Gas consumption of single opening and closing cycle	38	49	50	38	49	50	L
Minimum Spring Locking Force		5300	5200		9600	9400	N
Workpiece weight	130	130	130	220	220	220	kg
Opening/closing time	2.2/2.2	1.9/4.6	3/1.9	2.2/2.2	1.9/4.6	3/1.9	s

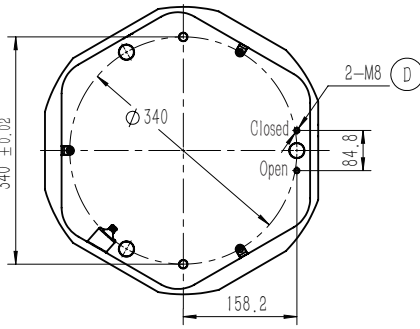
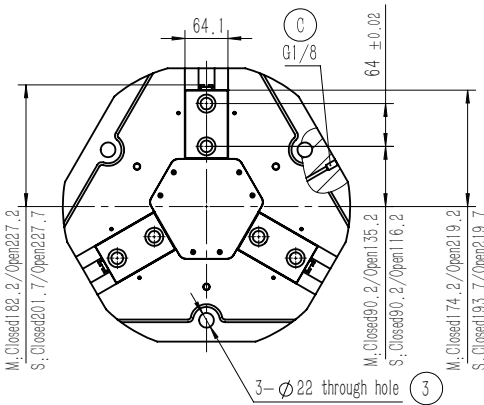
P: Compressed air pressure [bar]

Gas consumption: volume of gas consumed at normal pressure (0.5MPa)

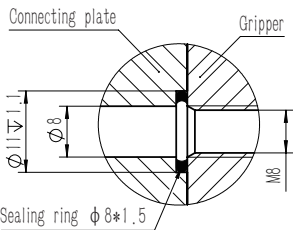
Maximum allowable single-finger gripping weight/kg	15	Specification of air connection port	G1/4
Repeated gripping accuracy/mm	± 0.05	Temperature range of application/°C	-5~60
Operating air pressure range/bar	3~8	IP rating	40



- 1 Gripping finger location pin bushing (standard)
- 2 Mounting hole of gripping finger
- 3 Gripper mounting hole
- 6 Mounting and positioning pin hole
- A Compressed air connection port
- B Location of inductive proximity sensor
- C Positive-pressure air blowing hole/grease injection hole
- D Bottom ventilation hole (version-B)
- E Location of magnetic proximity sensor

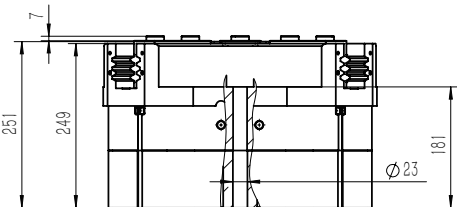


FZ290-430-B Ventilation at bottom



FZ290-430-NC/NO Self-locking

Built-in spring, mechanical self-locking



FZ290-430-P Dust-proof

Dust-proof module, IP64 for the positive-pressure air blowing hole after it, is connected to the compressed air of 0.05-0.10MPa, otherwise, IP50

