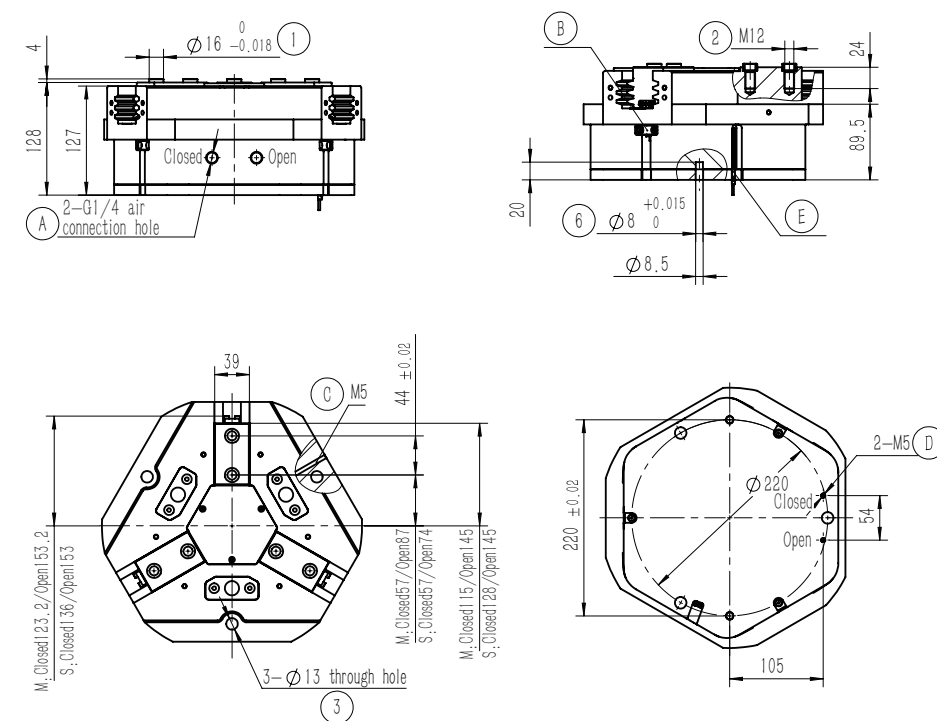
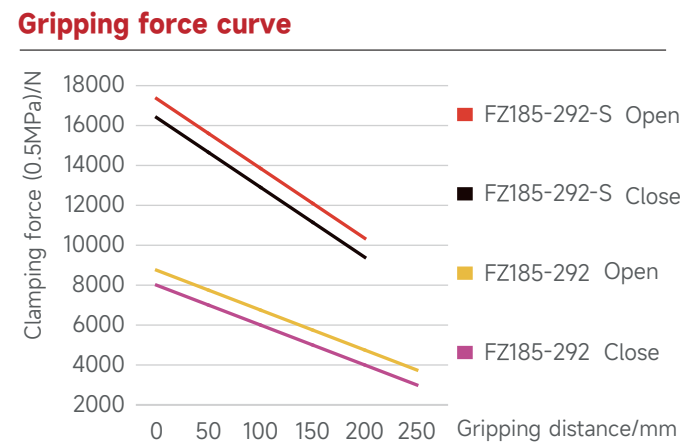
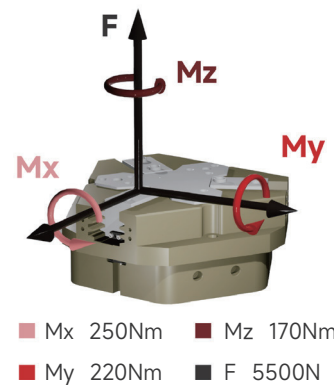
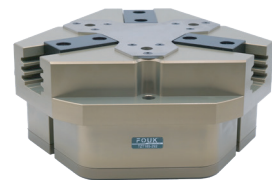


Toothed three-finger gripper series FOUK-FZ

FZ185-292-M/S

FZ185-292



- ① Gripping finger location pin bushing (standard)
- ② Mounting hole of gripping finger
- ③ Gripper mounting hole
- ⑥ Mounting and positioning pin hole
- Ⓐ Compressed air connection port
- Ⓑ Location of inductive proximity sensor
- Ⓒ Positive-pressure air blowing hole/grease injection hole
- Ⓓ Bottom ventilation hole (version-B)
- Ⓔ Location of magnetic proximity sensor

FZ 185-292 - S - B - C45 - P - NO - H

| Serial No. | Cylinder bore | Maximum shell diameter | Short stroke | Ventilation at bottom | Length of push rod | Dust cover IP64 | Self-locking form | High temperature resistance |
|------------|------------------------------|------------------------|--|---------------------------|--|----------------------|--|-----------------------------|
| FZ | Toothed three-finger gripper | | S Increased gripping force / Standard version M | / Ventilation on the side | C45 45mm C70 70mm / Without push plate | / Without dust cover | NO Self-locking by opening NC Self-locking by closing / Without self-locking | H ~5~240°C / 0~60°C |

Inductive proximity sensor

| | |
|------------------|--------------------------|
| IPSD-2NS-0831-L3 | Inductive, NPN, 3-core3m |
| IPSD-2PS-0831-L3 | Inductive, PNP, 3-core3m |

Magnetic proximity sensor

| | |
|---------|-------------------------|
| D-M9NAL | Magnetic, NPN, 3-core3m |
| D-M9PAL | Magnetic, PNP, 3-core3m |

*Two sensors are required for each gripper. For the detailed monitoring of two positions, see the sensor appendix.

| Product attributes | FZ185-292 | FZ185-292-NO | FZ185-292-NC | FZ185-292-S | FZ185-292-S-NO | FZ185-292-S-NC | Unit |
|---|-------------|--------------|--------------|-------------|----------------|----------------|------|
| Single stroke | 30 | 30 | 30 | 17 | 17 | 17 | mm |
| Product weight | 21 | 25 | 24 | 22 | 26 | 25 | kg |
| Maximum allowable gripping distance | 250 | 250 | 250 | 210 | 210 | 210 | mm |
| Theoretical maximum gripping force: opening/closing | 1750P/1600P | 1750P/- | -/1600P | 3470P/3280P | 3470P/- | -/3280P | N |
| Gas consumption of single opening and closing cycle | 11 | 18 | 15 | 11 | 18 | 15 | L |
| Minimum Spring Locking Force | | 3500 | 3400 | | 7000 | 6800 | N |
| Workpiece weight | 50 | 50 | 50 | 100 | 100 | 100 | kg |
| Opening/closing time | 1.25/1.25 | 1.1/1.7 | 2.1/1.1 | 1.25/1.25 | 1.1/1.7 | 2.1/1.1 | s |

P: Compressed air pressure [bar]

Gas consumption: volume of gas consumed at normal pressure (0.5MPa)

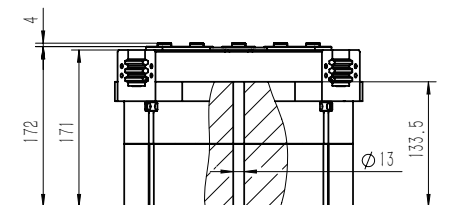
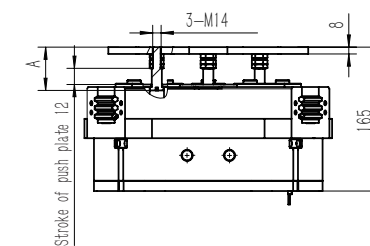
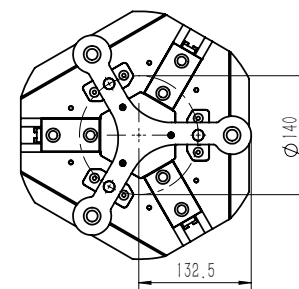
| | | | |
|--|--------|--------------------------------------|-------|
| Maximum allowable single-finger gripping weight/kg | 8.5 | Specification of air connection port | G1/4 |
| Repeated gripping accuracy/mm | ± 0.05 | Temperature range of application/°C | -5~60 |
| Operating air pressure range/bar | 3~8 | IP rating | 40 |

FZ185-292-C45 Pushing

The length A of the push rod can be of the standard version or the extended version, with loading function, and the minimum thrust of the push plate is 240N.

FZ185-292-NC/NO Self-locking

Built-in spring, mechanical self-locking



FZ185-292-P Dust-proof

Dust-proof module, IP64 for the positive-pressure air blowing hole after it, is connected to the compressed air of 0.05-0.10MPa, otherwise, IP50

