

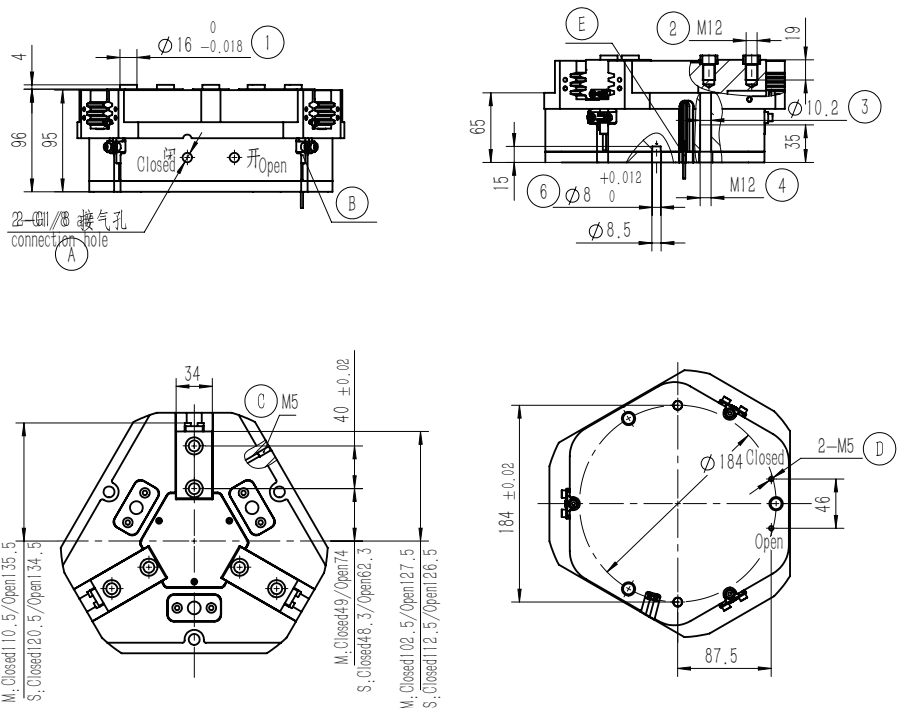
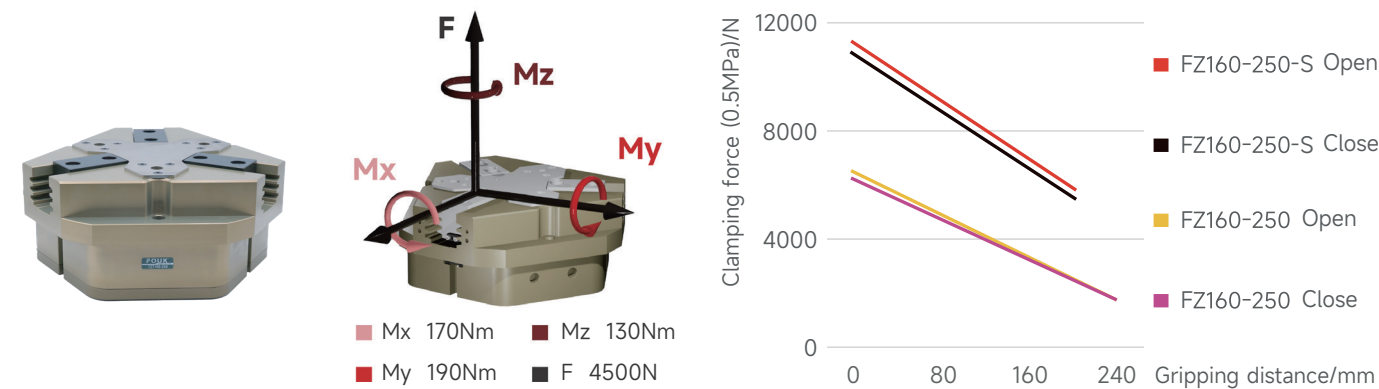
Toothed three-finger gripper series FOUK-FZ

FZ160-250-M/S

FZ160-250

Static load-bearing torque

Gripping force curve



- 1 Gripping finger location pin bushing (standard)
- 2 Mounting hole of gripping finger
- 3 Gripper mounting hole
- 4 Mounting and positioning pin hole
- 5 Compressed air connection port
- 6 Location of inductive proximity sensor
- 7 Positive-pressure air blowing hole/grease injection hole
- 8 Bottom ventilation hole (version-B)
- 9 Location of magnetic proximity sensor

FZ 160-250 - S - B - C30 - P - NO - H

Serial No.	Cylinder bore	Maximum shell diameter	Short stroke	Ventilation at bottom	Length of push rod	Dust cover IP64	Self-locking form	High temperature resistance
FZ Toothed three-finger gripper			S Increased gripping force Standard version M	/ Ventilation on the side	C30 30mm C55 55mm / Without push plate	/ Without dust cover	NO Self-locking by opening NC Self-locking by closing / Without self-locking	H -5~240°C / 0~60°C

Inductive proximity sensor

IPSD-2NS-0831-L3	Inductive, NPN, 3-core3m
IPSD-2PS-0831-L3	Inductive, PNP, 3-core3m

Magnetic proximity sensor

D-M9NAL	Magnetic, NPN, 3-core3m
D-M9PAL	Magnetic, PNP, 3-core3m

*Two sensors are required for each gripper. For the detailed monitoring of two positions, see the sensor appendix.

Product attributes	FZ160-250	FZ160-250-NO	FZ160-250-NC	FZ160-250-S	FZ160-250-S-NO	FZ160-250-S-NC	Unit
Single stroke	25	25	25	14	14	14	mm
Product weight	10.5	13.5	13.5	10.5	13.5	13.5	kg
Maximum allowable gripping distance	240	240	240	200	200	200	mm
Theoretical maximum gripping force: opening/closing	1300P/1250P	1300P/-	-/1250P	2260P/2170P	2260P/-	-/2170P	N
Gas consumption of single opening and closing cycle	5	7.2	7.2	5	7.2	7.2	L
Minimum Spring Locking Force		3460	2000		3460	2000	N
Workpiece weight	39	39	39	67	67	67	kg
Opening/closing time	1.2/1.2	1/1.5	1.5/1	1.2/1.2	1/1.5	1.5/1	s

P: Compressed air pressure [bar]

Gas consumption: volume of gas consumed at normal pressure (0.5MPa)

Maximum allowable single-finger gripping weight/kg	6	Specification of air connection port	G1/8
Repeated gripping accuracy/mm	± 0.02	Temperature range of application/°C	-5~60
Operating air pressure range/bar	3~8	IP rating	40

FZ160-250-C30 Pushing

The length A of the push rod can be of the standard version or the extended version, with loading function, and the minimum thrust of the push plate is 210N.

FZ160-250-NC/NO Self-locking

Built-in spring, mechanical self-locking

FZ160-250-P Dust-proof

Dust-proof module, IP64 for the positive-pressure air blowing hole after it, is connected to the compressed air of 0.05-0.10MPa, otherwise, IP50

FZ160-250-B Ventilation at bottom