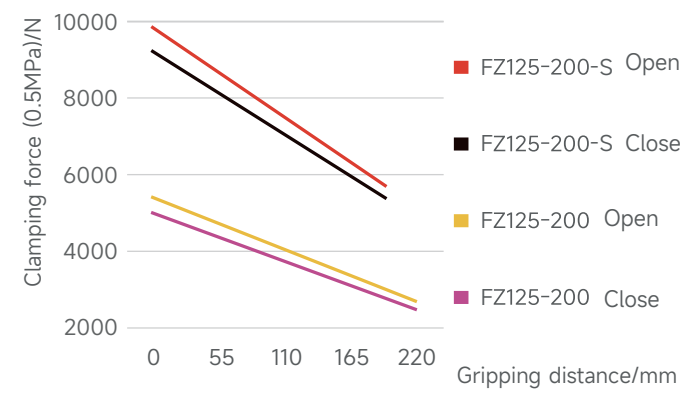
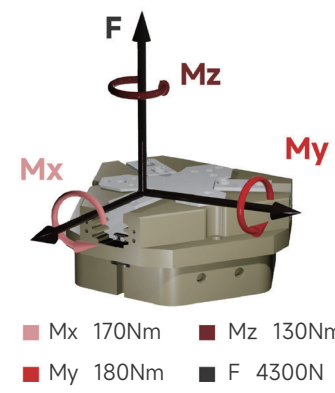


Toothed three-finger gripper series FOUK-FZ

FZ125-200

Static load-bearing torque

Gripping force curve



FZ 125-200 - S - B - C35 - P - NO - H

Serial No.	Cylinder bore	Maximum shell diameter	Short stroke	Ventilation at bottom	Length of push rod	Dust cover IP64	Self-locking form	High temperature resistance
FZ Toothed three-finger gripper			S Increased gripping force Standard version M	/ Ventilation on the side	C35 35mm C43 43mm / Without push plate	/ Without dust cover	NO Self-locking by opening NC Self-locking by closing / Without self-locking	H ~5~240°C / 0~60°C

Inductive proximity sensor

IPSD-2NS-0831-L3	Inductive, NPN, 3-core3m
IPSD-2PS-0831-L3	Inductive, PNP, 3-core3m

Magnetic proximity sensor

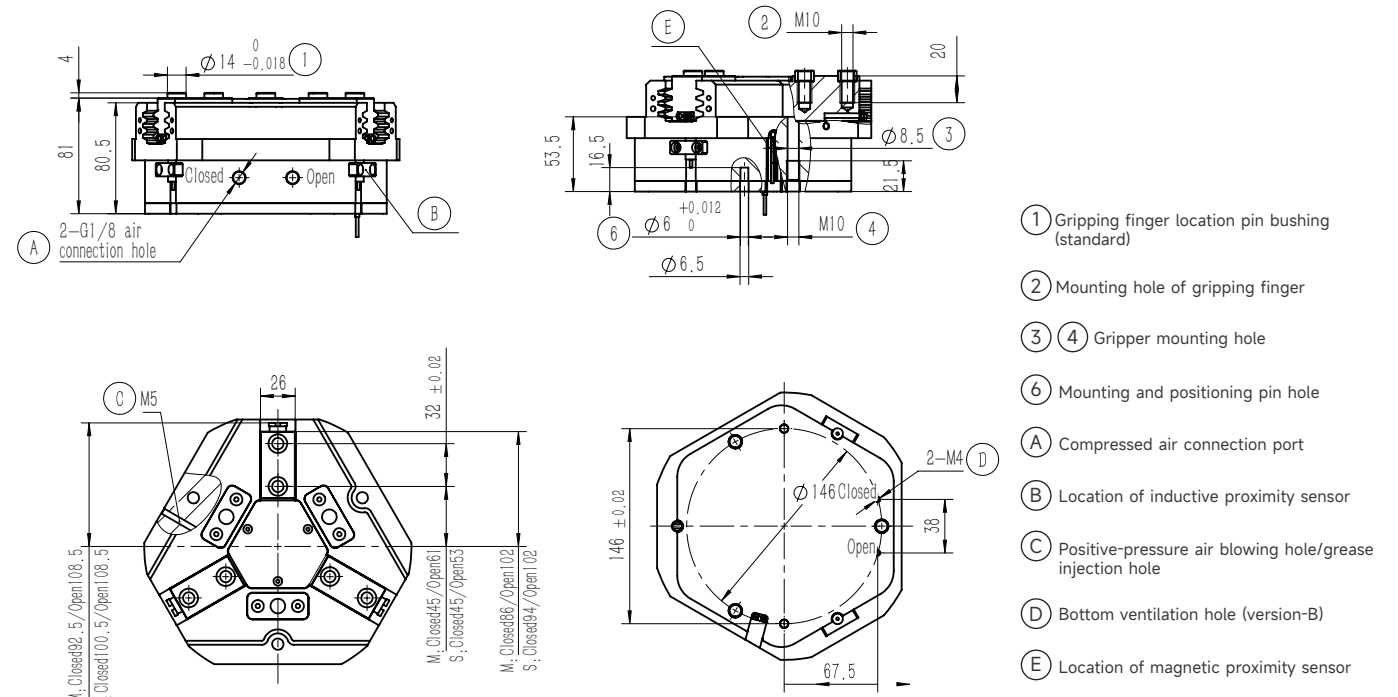
D-M9NAL	Magnetic, NPN, 3-core3m
D-M9PAL	Magnetic, PNP, 3-core3m

*Two sensors are required for each gripper. For the detailed monitoring of two positions, see the sensor appendix.

Product attributes	FZ125-200	FZ125-200-NO	FZ125-200-NC	FZ125-200-S	FZ125-200-S-NO	FZ125-200-S-NC	Unit
Single stroke	16	16	16	8	8	8	mm
Product weight	6	8	8	6	8	8	kg
Maximum allowable gripping distance	220	220	220	190	190	190	mm
Theoretical maximum gripping force: opening/closing	1080P/1000P	1080P/-	-/1000P	1960P/1830P	1960P/-	-/1830P	N
Gas consumption of single opening and closing cycle	3.0	5.3	5.3	3.0	5.3	5.3	L
Minimum Spring Locking Force		1650	1550		3300	3100	N
Workpiece weight	30	30	30	55	55	55	kg
Opening/closing time	0.5/0.5	0.4/0.8	0.8/0.4	0.5/0.5	0.4/0.8	0.8/0.4	s

Maximum allowable single-finger gripping weight/kg	3.5	Specification of air connection port	G1/8
Repeated gripping accuracy/mm	± 0.03	Temperature range of application/°C	-5~60
Operating air pressure range/bar	3~8	IP rating	40

FZ125-200-M/S

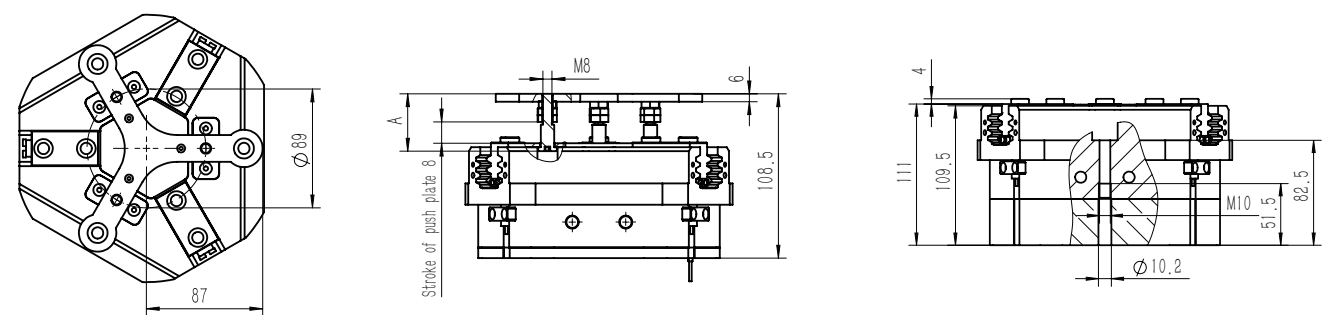


FZ125-200-C35 Pushing

The length A of the push rod can be of the standard version or the extended version, with loading function, and the minimum thrust of the push plate is 120N. If it is dust-proof and provided with the push plate, the stroke is 5.5.

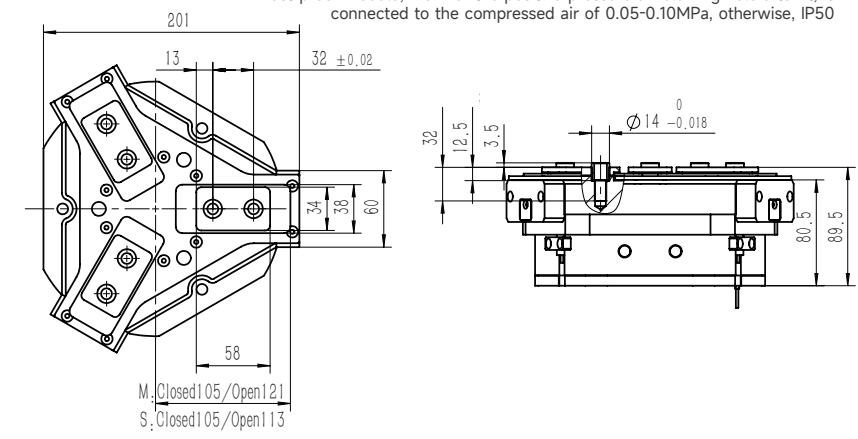
FZ125-200-NC/NO Self-locking

Built-in spring, mechanical self-locking



FZ125-200-P Dust-proof

Dust-proof module, IP64 for the positive-pressure air blowing hole after it, is connected to the compressed air of 0.05-0.10MPa, otherwise, IP50



FZ125-200-B Ventilation at bottom

