

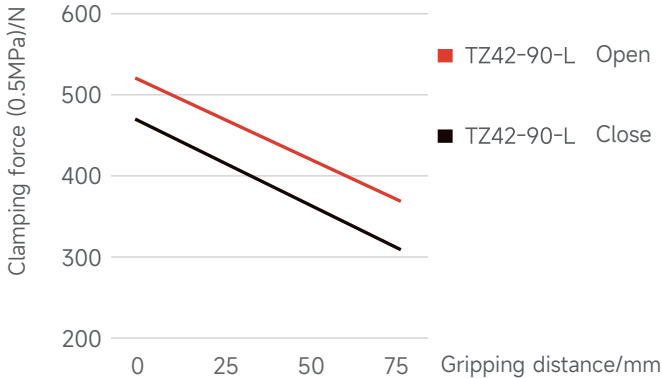
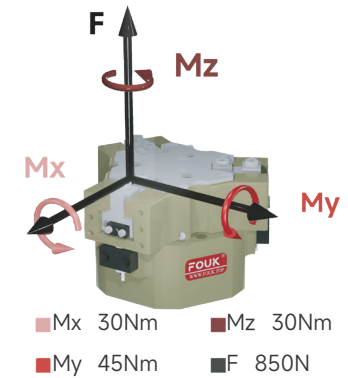
Three-finger gripper long stroke series FOUK-TZL

TZ42-90-L

TZ42-90-L

Static load-bearing torque

Gripping force curve



TZ 42 - 90 - L - B - C20 - P - H

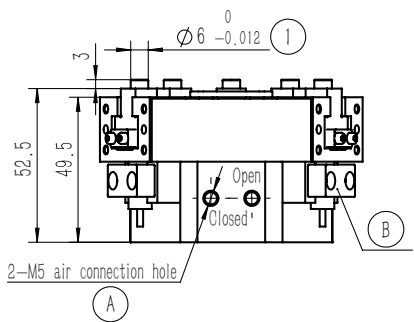
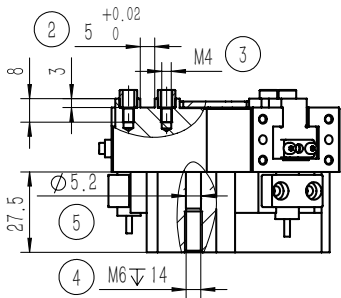
Serial No.	Cylinder bore	Maximum shell diameter	Stroke extension	Ventilation at bottom	Length of push rod	Dust cover IP64	High temperature resistance
TZ T-shaped three-finger gripper				/ Ventilation on the side	C20 20.5mm C30 30.5mm / Without push plate	/ Without dust cover	H -5~240°C / 0~60°C

Inductive proximity sensor

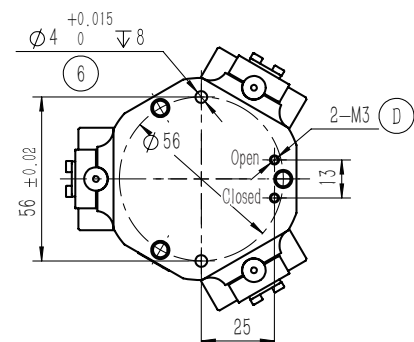
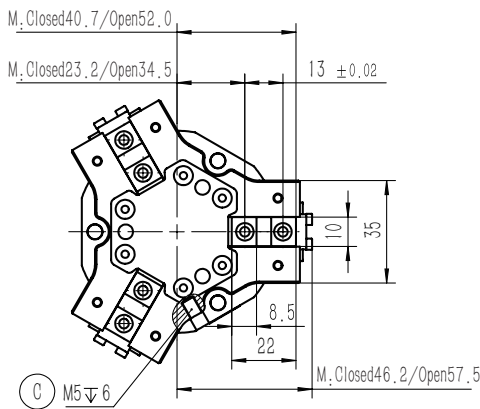
IPSD-2NS-0823-L3	Inductive, NPN, 3-core3m
IPSD-2PS-0823-L3	Inductive, PNP, 3-core3m

\*Two sensors are required for each gripper. For the detailed monitoring of two positions, see the sensor appendix.

Product attributes	TZ42-90-L		Unit
Single stroke	11		mm
Product weight	0.7		kg
Maximum allowable gripping distance	75		mm
Theoretical maximum gripping force: opening/closing	104P/94P		N
Workpiece weight	2.5		kg
Opening/closing time	0.06/0.06		s
Gas consumption of single opening and closing cycle	0.25		L
P: Compressed air pressure [bar] Gas consumption: volume of gas consumed at normal pressure (0.5MPa)			
Repeated gripping accuracy/mm	± 0.02	Specification of air connection port	M5
Operating air pressure range/bar	3~7	Temperature range of application/°C	-5~60
IP rating	40	Maximum allowable single-finger gripping weight/kg	0.35



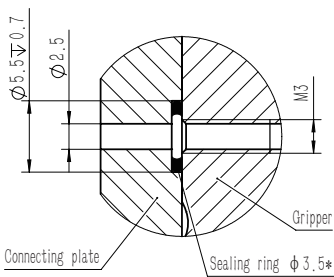
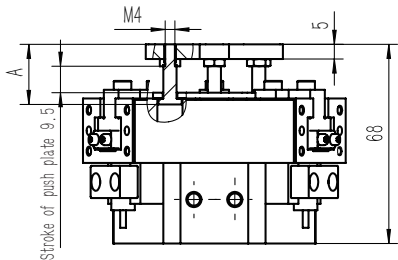
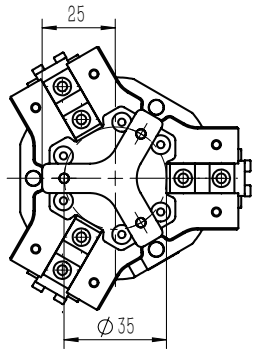
- ① Gripping finger location pin bushing (standard)
- ② Gripping finger positioning groove
- ③ Mounting hole of gripping finger
- ④ ⑤ ⑥ Gripper mounting hole
- ⑥ Gripper positioning hole
- A Compressed air connection port
- B Location of inductive proximity sensor
- C Positive-pressure air blowing hole/grease injection hole
- D Bottom ventilation hole (version-B)



TZ42-90-L-C20 Pushing

TZ42-90-L-B Ventilation at bottom

The length A of the push rod can be of the standard version or the extended version, with loading function, and the minimum thrust of the push plate is 15N. If it is dust-proof and provided with the push plate, the stroke is 6.5.



TZ42-90-L-P Dust-proof

Dust-proof module, IP64 for the positive-pressure air blowing hole after it, is connected to the compressed air of 0.05-0.10MPa, otherwise, IP50

