

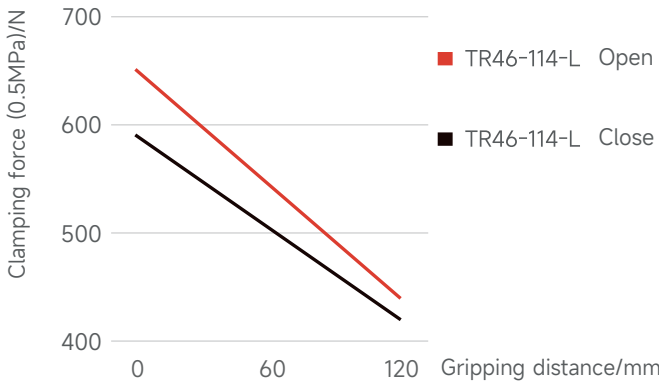
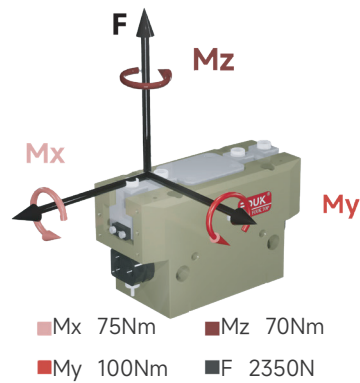
Parallel gripper long stroke series FOUK-TRL

TR46-114-L

TR46-114-L

Static load-bearing torque

Gripping force curve



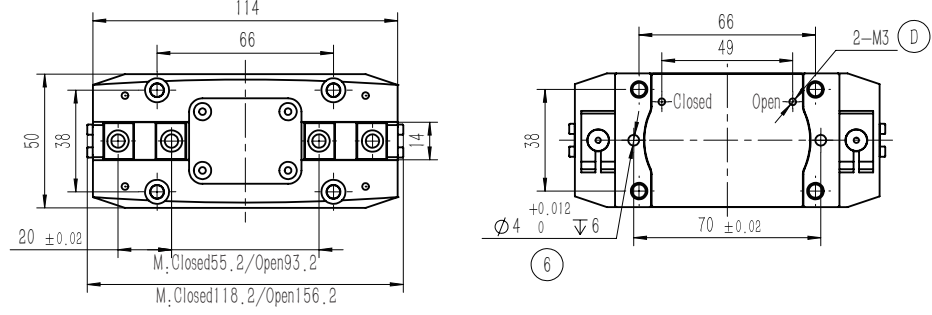
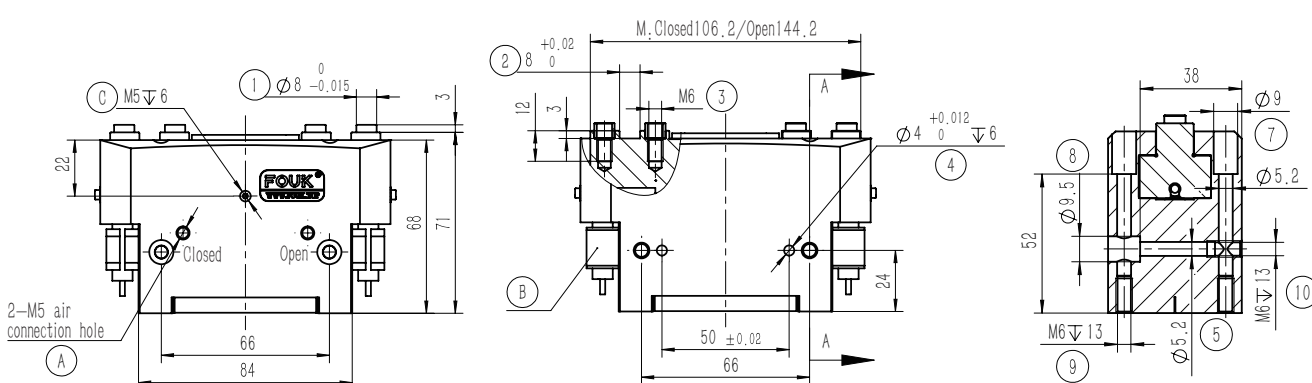
TR 46 - 114 - L - B - P - H

Serial No.	Cylinder bore	Shell length	Stroke extension	Ventilation at bottom	Dust cover IP64	High temperature resistance
TR T-shaped parallel gripper				/ Ventilation on the side	/ Without dust cover	H -5~240°C / 0~60°C

Inductive proximity sensor

IPSD-2NS-0823-L3	Inductive, NPN, 3-core3m
IPSD-2PS-0823-L3	Inductive, PNP, 3-core3m

\*Two sensors are required for each gripper. For the detailed monitoring of two positions, see the sensor appendix.



- ① Gripping finger location pin bushing (standard)
- ② Gripping finger positioning groove
- ③ Mounting hole of gripping finger
- ⑤ ⑦ ⑧ ⑨ ⑩ Gripper mounting hole
- ④ ⑥ Gripper positioning hole
- A Compressed air connection port
- B Location of inductive proximity sensor
- C Positive-pressure air blowing hole/grease injection hole
- D Bottom ventilation hole (version-B)

Product attributes	TR46-114-L	Unit
Single stroke	19	mm
Product weight	1.1	kg
Maximum allowable gripping distance	120	mm
Theoretical maximum gripping force: opening/closing	130P/118P	N
Workpiece weight	3.2	kg
Opening/closing time	0.12/0.12	s
Gas consumption of single opening and closing cycle	0.48	L

P: Compressed air pressure [bar]

Gas consumption: volume of gas consumed at normal pressure (0.5MPa)

Repeated gripping accuracy/mm	± 0.02	Specification of air connection port	M5
Operating air pressure range/bar	3~7	Temperature range of application/°C	-5~60
IP rating	40	Maximum allowable single-finger gripping weight/kg	0.35

TR46-114-L-P Dust-proof

Dust-proof module, IP64 for the positive-pressure air blowing hole after it, is connected to the compressed air of 0.05-0.10MPa, otherwise, IP50

TR46-114-L-B Ventilation at bottom

