

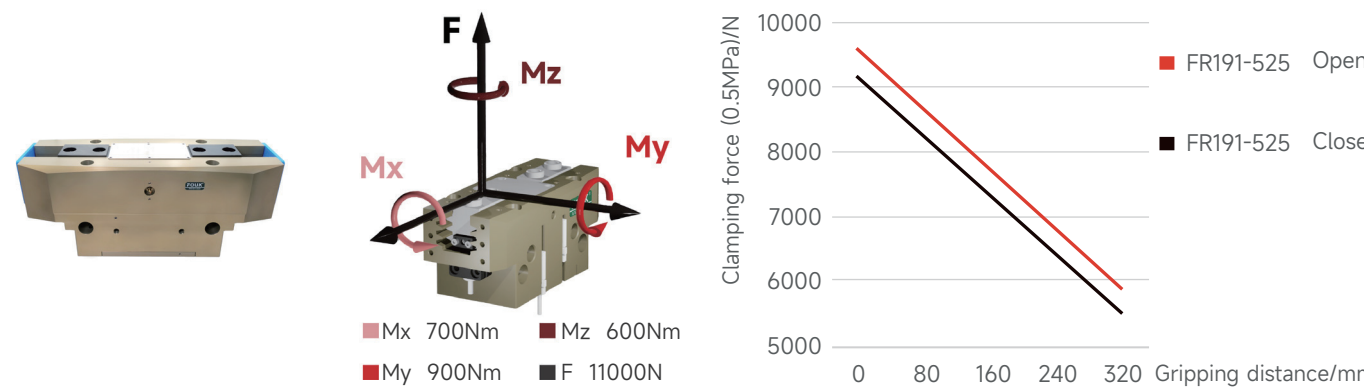
Toothed parallel gripper series FOUK-FR

FR191-525-L

FR191-525-L

Static load-bearing torque

Gripping force curve



FR 191 - 525 - L - B - P - NC - H

Serial No.	Cylinder bore	Shell length	Stroke extension	Ventilation at bottom	Dust cover IP64	Self-locking form	High temperature resistance
FR Toothed parallel gripper				/ Ventilation on the side	/ Without dust cover	NC Self-locking by closing / Without self-locking	H -5~240°C / 0~60°C

Inductive proximity sensor

IPSD-2NS-0848-L3	Inductive, NPN, 3-core3m
IPSD-2PS-0848-L3	Inductive, PNP, 3-core3m

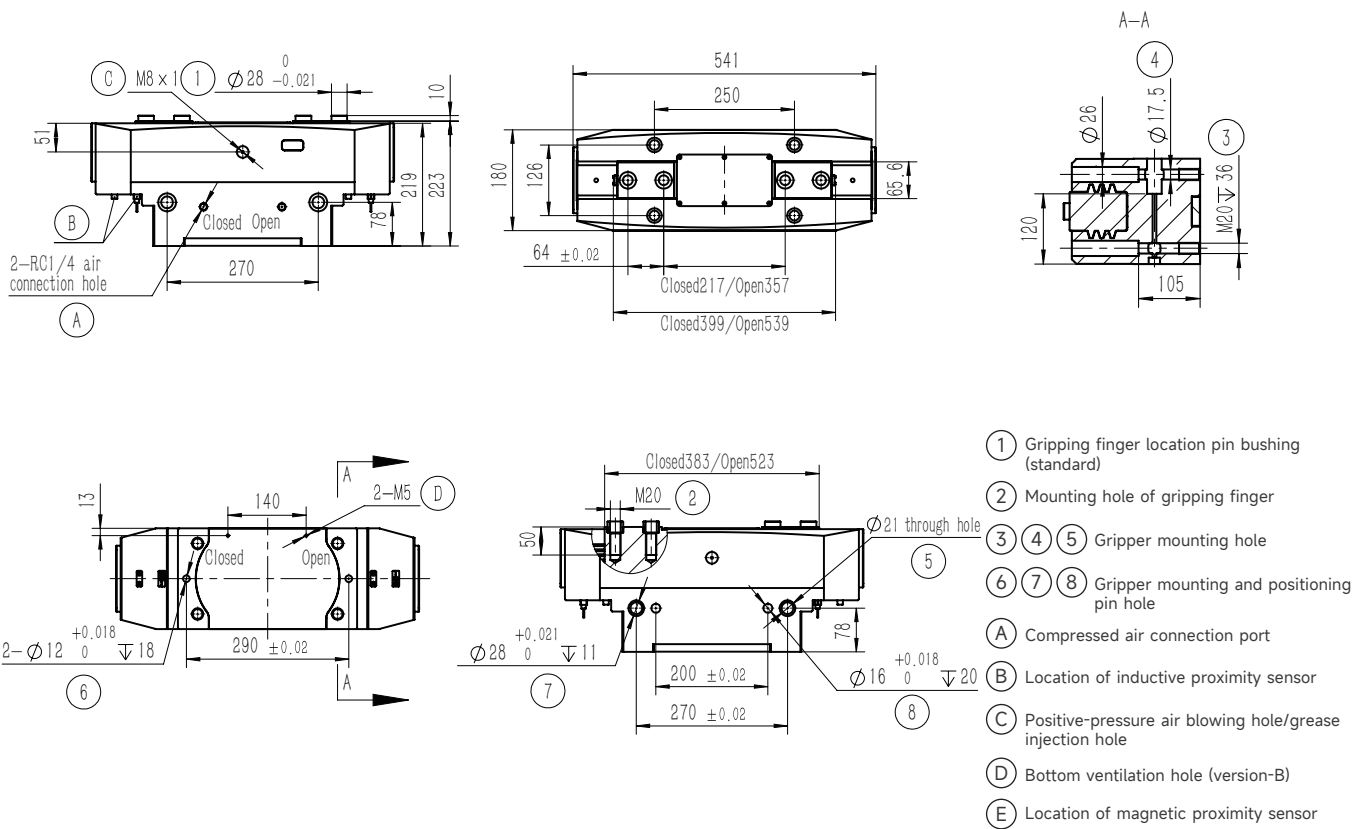
\*Two sensors are required for each gripper. For the detailed monitoring of two positions, see the sensor appendix.

Product attributes	FR191-525-L	FR191-525-L-NC	Unit
Single stroke	70	70	mm
Product weight	52	62	kg
Maximum allowable gripping distance	320	320	mm
Theoretical maximum gripping force: opening/closing	1900P/1820P	-/1820P	N
Minimum Spring Locking Force		2300	N
Workpiece weight	90	110	kg
Opening/closing time	1/1	0.8/1.5	s
Gas consumption of single opening and closing cycle	22.5	25.5	L

P: Compressed air pressure [bar]

Gas consumption: volume of gas consumed at normal pressure (0.5MPa)

Repeated gripping accuracy/mm	± 0.07	Specification of air connection port	Rc1/4
Operating air pressure range/bar	3~8	Temperature range of application/°C	-5~60
IP rating	40	Maximum allowable single-finger gripping weight/kg	20



FR191-525-L-B Ventilation at bottom

FR191-525-L-NC/NO Self-locking

Built-in spring, mechanical self-locking



FR191-525-L-P Dust-proof

Dust-proof module, IP64 for the positive-pressure air blowing hole after it, is connected to the compressed air of 0.05-0.10MPa, otherwise, IP50

