

Truss System Disc-type Gripping Unit Series FOUK-TG

FZ55-100

TG32



TG 32 - FZ55 - 100 - 0° - ZG32

| | | | | | | | | | |
|------------|--|---------------|--|------------------------------|--|-----------------------|--|-------------------------------|--|
| Serial No. | | Cylinder bore | | Model of finger cylinder | | Standard installation | | Flexible compensation unit | |
| FZ | | Gripping unit | | Toothed three-finger gripper | | FZ55-100 | | 0° | |
| | | | | Toothed parallel gripper | | FR45-120 | | Three-finger flip | |
| | | | | | | | | 180° | |
| | | | | | | | | Two-finger flip | |
| | | | | | | | | 90° | |
| | | | | | | | | No characters | |
| | | | | | | | | Without flexible compensation | |

| Inductive proximity sensor | | | Inductive proximity sensor | | | Magnetic proximity sensor | | |
|----------------------------|------------------|--------------------------|----------------------------|------------------|--------------------------|---------------------------|-------------------------|--|
| Used for TG | IPSD-2NS-0823-L3 | Inductive, NPN, 3-core3m | Used for gripper | IPSD-2NS-0823-L3 | Inductive, NPN, 3-core3m | MZC2-1V7NS-FU0 | Magnetic, NPN, 3-core3m | |
| | IPSD-2PS-0823-L3 | Inductive, PNP, 3-core3m | | IPSD-2PS-0823-L3 | Inductive, PNP, 3-core3m | MZC2-1V7PS-FU0 | Magnetic, PNP, 3-core3m | |
| | | | | | | | | |

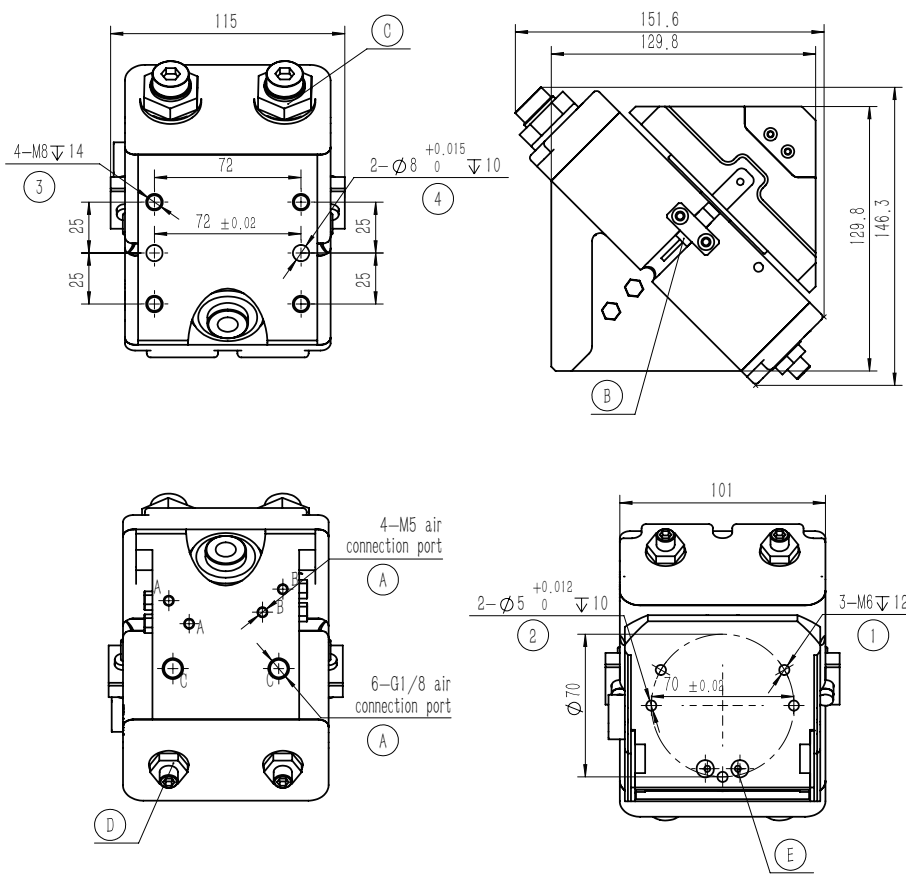
*It is recommended to use two sensors for each rotating unit, and it is recommended to use two sensors for each gripper. For details, see the sensor appendix.

| Product attributes | TG32 | Unit |
|---|----------------------|------|
| Theoretical torque | 2.1 × P | N·m |
| Suitable Workpiece Load for Single-Side Finger Cylinder | 3 | kg |
| Maximum working load of single-side finger cylinder | 4 | kg |
| Product weight | 4.8 | kg |
| Rotation time | 0.5~1.2 | sec |
| Specification of buffer unit | M20 Hydraulic buffer | |
| Repeated positioning accuracy | ± 0.05 | mm |
| Operating air pressure | 3~6 | bar |
| Air connection port of air distribution pipe | G1/8+M5 | |
| Operating temperature range | -5~60 | °C |
| IP rating | 65 | |

| Product attributes | Parameter Value | Unit |
|---|-----------------|------|
| Single stroke | 8 | mm |
| Product weight | 0.87 | kg |
| Maximum allowable gripping distance | 110 | mm |
| Specification of air connection port | M5 | |
| Theoretical maximum gripping force: opening/closing | 198P/172P | N |
| Opening/closing time | 0.05/0.05 | s |
| Repeated gripping accuracy | ± 0.02 | mm |
| Operating air pressure range | 3~8 | bar |
| Temperature range of application | -5~60 | °C |
| IP rating | 40 | |

| Product attributes | Parameter Value | Unit |
|---|-----------------|------|
| Single stroke | 10 | mm |
| Product weight | 0.9 | kg |
| Maximum allowable gripping distance | 140 | mm |
| Specification of air connection port | G1/8 | |
| Theoretical maximum gripping force: opening/closing | 138P/124P | N |
| Opening/closing time | 0.06/0.06 | s |
| Repeated gripping accuracy | ± 0.02 | mm |
| Operating air pressure range | 3~8 | bar |
| Temperature range of application | -5~60 | °C |
| IP rating | 40 | |

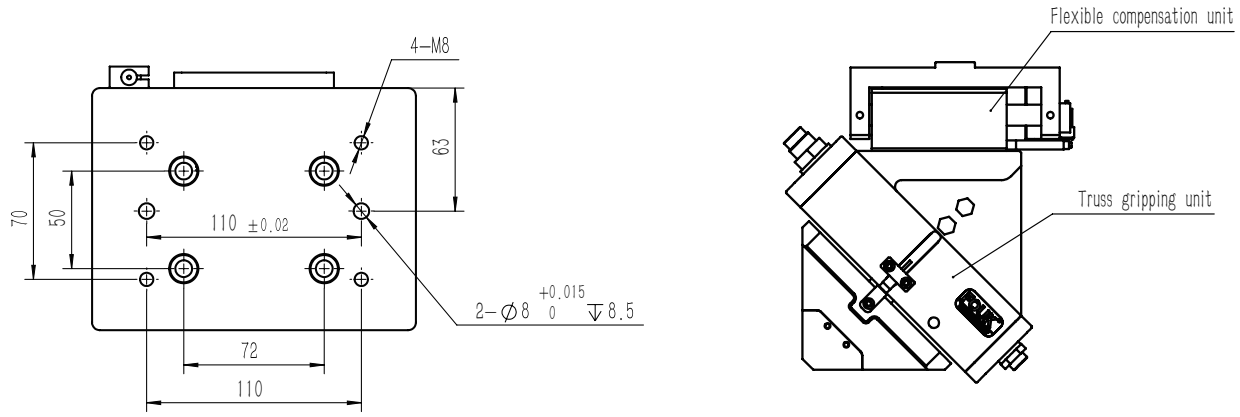
TG32



- ① Gripper mounting hole
- ② Gripper mounting and positioning hole
- ③ Mounting hole of swing cylinder
- ④ Mounting and positioning hole of swing cylinder
- A Compressed air connection port
- B Location of inductive proximity sensor
- C Hydraulic buffer
- D Swing cylinder rotation limit
- E Air passage hole in gripper

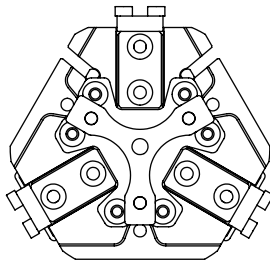
Note: A and B are gripper air connection ports
C is the air connection port of the swing cylinder

TG32-ZG32

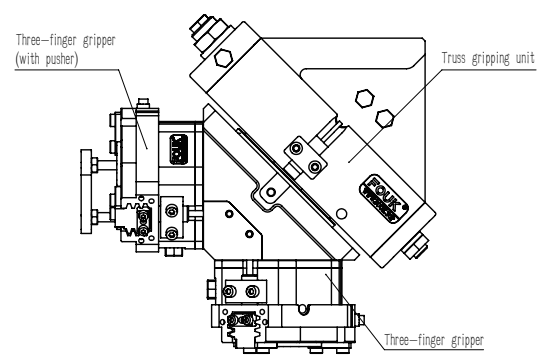


TG32-FZ55-100-0°Standard installation

Note: A set of pusher module is provided for the standard version.

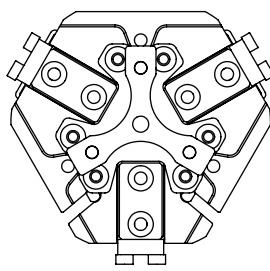


The mounting angle is 0°

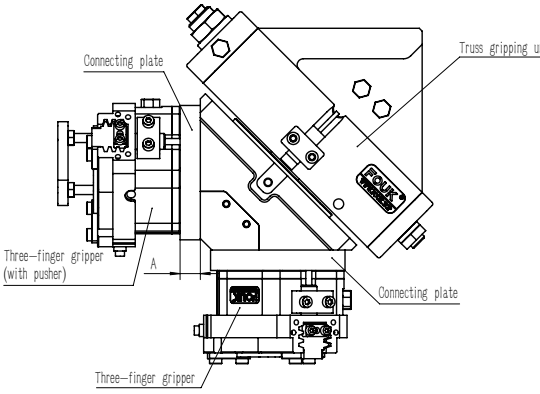


TG32-FZ55-100-180°Finger cylinder flip

Note: The connecting plate is designed with different thickness A according to different requirements; and a set of pusher module is provided for the standard version.

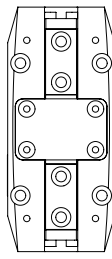


The mounting angle is 180°

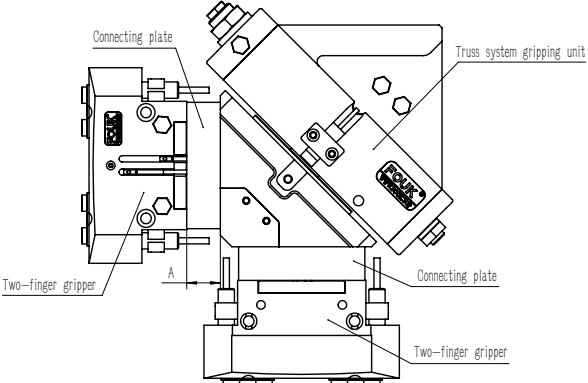


TG32-FR45-120-0°Standard installation

Note: The connecting plate is designed with different thickness A according to different requirements.

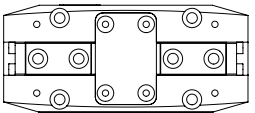


The mounting angle is 0°



TG32-FR45-120-90°Finger cylinder flip

Note: The connecting plate is designed with different thickness A according to different requirements.



The mounting angle is 90°

