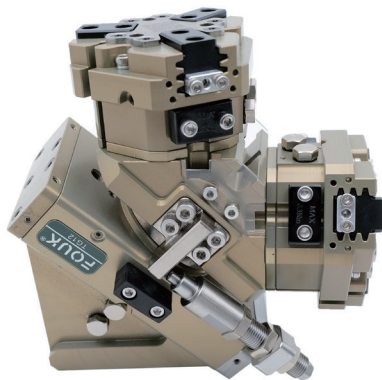


Truss System Disc-type Gripping Unit Series FOUK-TG

FZ34-68

TG12



TG

12

-

FZ34

-

68

-

0°

-

ZG12

Serial No.

Cylinder bore

Model of finger cylinder

Standard installation

0°

Flexible compensation unit

No characters

Without flexible compensation

TG Gripping unit

Toothed three-finger gripper

FZ34-68

Toothed parallel gripper

FR28-76

Inductive proximity sensor

Used for TG

IPSD-2NS-0823-L3

Inductive, NPN, 3-core3m

IPSD-2PS-0823-L3

Inductive, PNP, 3-core3m

Inductive proximity sensor

Used for gripper

IPSD-2NS-0818-L3

Inductive, NPN, 3-core3m

IPSD-2PS-0818-L3

Inductive, PNP, 3-core3m

Magnetic proximity sensor

MZC2-1V7NS-FU0

Magnetic, NPN, 3-core3m

MZC2-1V7PS-FU0

Magnetic, PNP, 3-core3m

*It is recommended to use two sensors for each rotating unit, and it is recommended to use two sensors for each gripper. For details, see the sensor appendix.

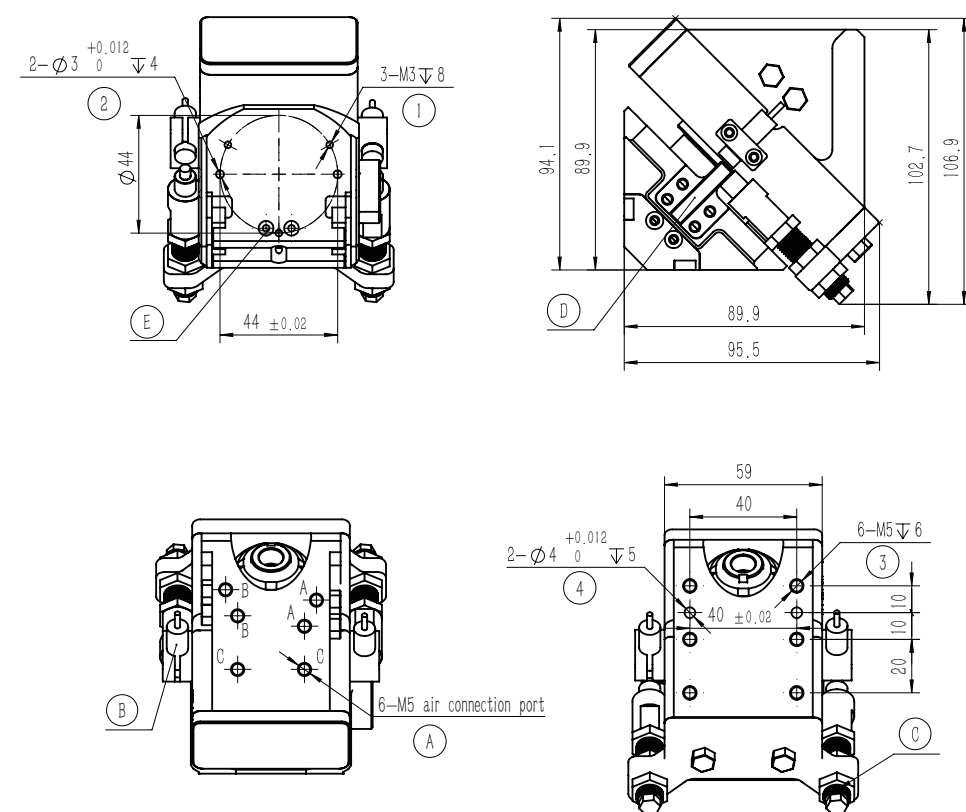
Product attributes	TG12	Unit
Theoretical torque	0.13 × P	N · m
Suitable Workpiece Load for Single-Side Finger Cylinder	0.8	kg
Maximum working load of single-side finger cylinder	1	kg
Product weight	1.4	kg
Rotation time	0.3~0.8	sec
Specification of buffer unit	M10 Hydraulic buffer	
Repeated positioning accuracy	± 0.05	mm
Operating air pressure	3~6	bar
Air connection port of air distribution pipe	M5	
Operating temperature range	-5~60	°C
IP rating	65	

Product attributes	Parameter Value	Unit
Single stroke	6	mm
Product weight	0.35	kg
Maximum allowable gripping distance	70	mm
Specification of air connection port	M5	
Theoretical maximum gripping force: opening/closing	76P/69P	N
Opening/closing time	0.04/0.04	s
Repeated gripping accuracy	± 0.02	mm
Operating air pressure range	3~8	bar
Temperature range of application	-5~60	°C
IP rating	40	

FR28-76

Product attributes	Parameter Value	Unit
Single stroke	6	mm
Product weight	0.3	kg
Maximum allowable gripping distance	90	mm
Specification of air connection port	M5	
Theoretical maximum gripping force: opening/closing	60P/55P	N
Opening/closing time	0.02/0.02	s
Repeated gripping accuracy	± 0.02	mm
Operating air pressure range	3~8	bar
Temperature range of application	-5~60	°C
IP rating	40	

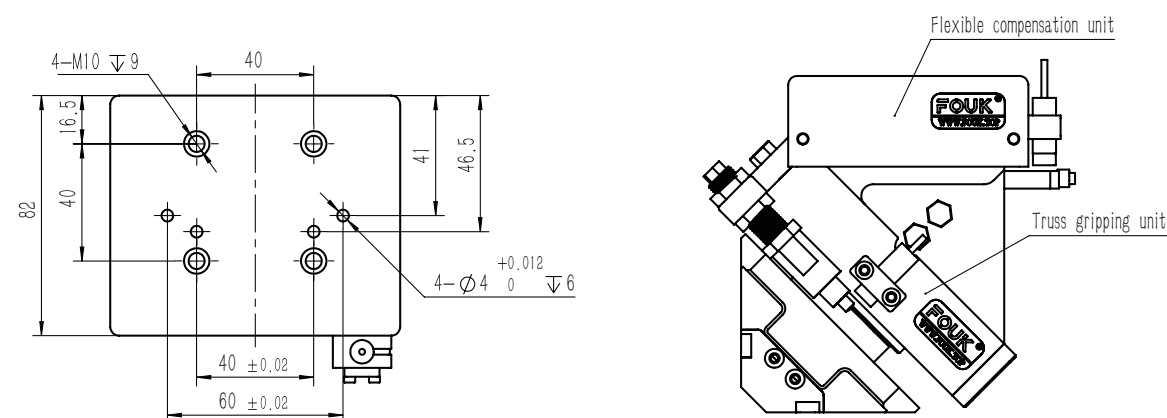
TG12



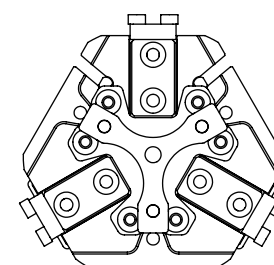
- ① Gripper mounting hole
- ② Gripper mounting and positioning hole
- ③ Mounting hole of swing cylinder
- ④ Mounting and positioning hole of swing cylinder
- ⑤ Compressed air connection port
- ⑥ Location of inductive proximity sensor
- ⑦ Hydraulic buffer
- ⑧ Swing cylinder rotation limit
- ⑨ Air passage hole in gripper

Note: A and B are gripper air connection ports
C is the air connection port of the swing cylinder

TG12-ZG12

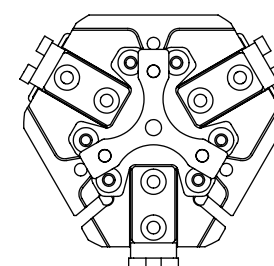


TG12-FZ34-68-0°Standard installation



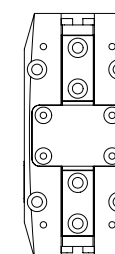
The mounting angle is 0°

TG12-FZ34-68-180° Finger cylinder flip



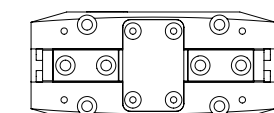
The mounting angle is 180°

TG12-FR28-76-0°Standard installation



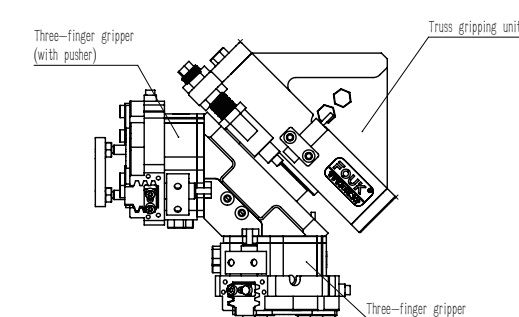
The mounting angle is 0°

TG12-FR28-76-90° Finger cylinder flip

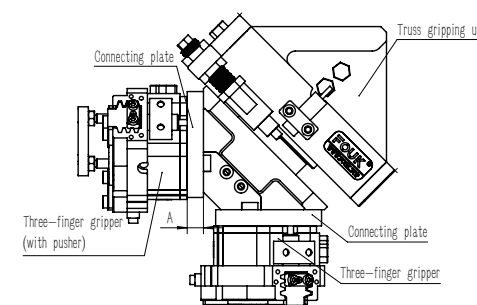


The mounting angle is 90°

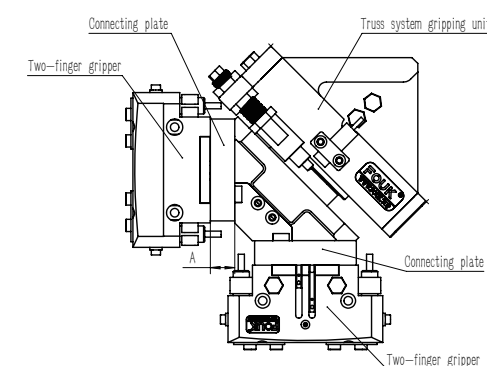
Note: A set of pusher module is provided for the standard version.



Note: The connecting plate is designed with different thickness A according to different requirements; and a set of pusher module is provided for the standard version.



Note: The connecting plate is designed with different thickness A according to different requirements.



Note: The connecting plate is designed with different thickness A according to different requirements.

