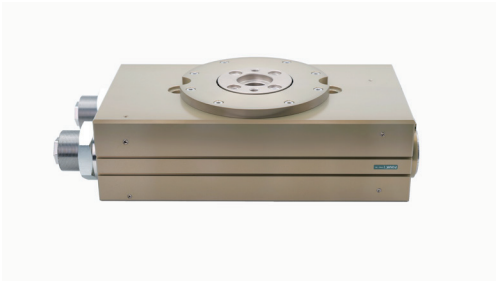


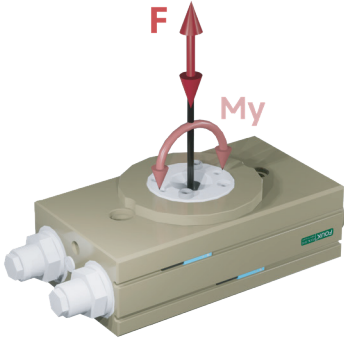
Rotary unit series FOUK-TF

TP63

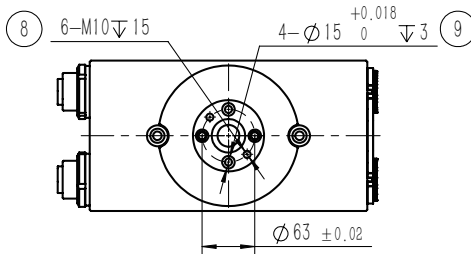
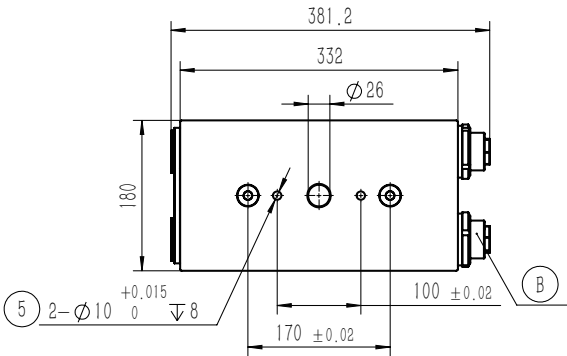
TP63



Static load-bearing torque



■ My 400Nm ■ F 10000N



TP

Serial No.

TP Rotating unit

63

Cylinder bore

- 90°

Rotation angle

Rotation angle 90°

Rotation angle 180°

Magnetic proximity sensor

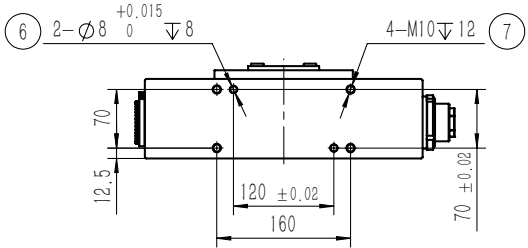
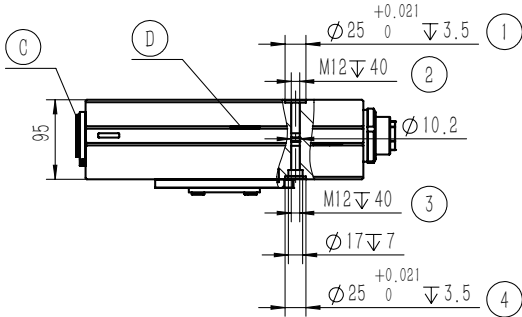
MZC2-1V7NS-FU0

Magnetic, NPN, 3-core3m

MZC2-1V7PS-FU0

Magnetic, PNP, 3-core3m

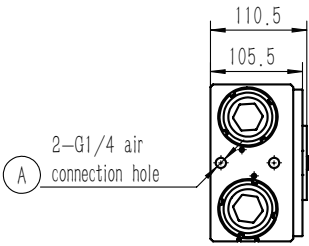
\*Two sensors are required for each rotation unit. For the detailed monitoring of two positions, see the sensor appendix.



Product attributes	Parameter Value	Unit
Product Code	TP63	
Cylinder bore	63	mm
Theoretical torque	15.6 × P	N·m
Rotation angle	90/180	°
Adjustment range of rotation angle	± 30	°
Product weight	20.15	kg
Allowable rotation time	1.5~6	s
Rotation time	2~4.5	sec
Maximum allowable kinetic energy	25	J
Sensor type	Magnetic proximity sensor	

P: Compressed air pressure [bar]

Specification of buffer unit	M45 Hydraulic buffer	Specification of air connection port	G1/4
Repeated gripping accuracy/mm	± 0.05	Temperature range of application/°C	-5~60
Operating air pressure range/bar	3~8	IP rating	65



- ① ⑨ The pin bushing is of the standard version
- ② ③ ⑦ ⑧ are gripper mounting holes
- ① ④ ⑤ ⑥ ⑨ are gripper positioning holes
- (A) Compressed air connection port
- (B) Hydraulic buffer
- (C) Adjustment knob for rotation limit
- (D) Location of magnetic proximity sensor

Note:

- To be used with the speed control valve
- The figure shows the middle position of rotation, and the gripper needs to be selected additionally.
- The output torque at the end position of rotation is half of the rated torque and is changed to the external limit to output the rated torque at the end position.