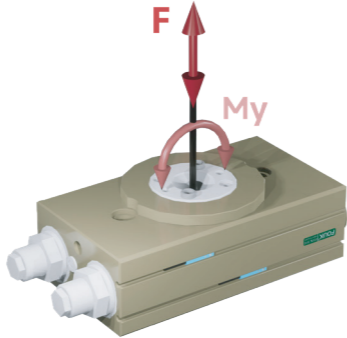


Rotary unit series FOUK-TF

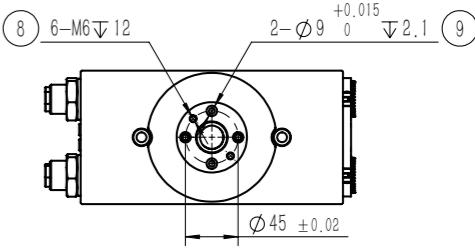
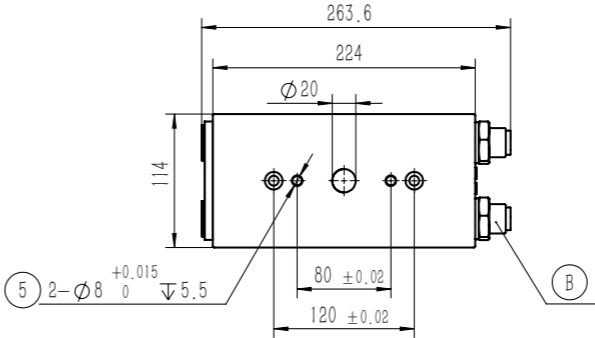
TP40

TP40

Static load-bearing torque



My 70Nm F 2500N

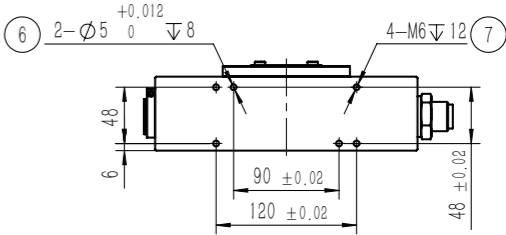
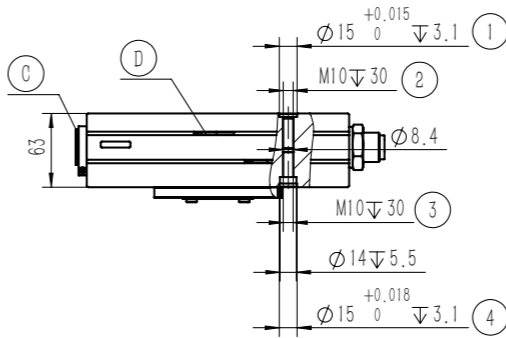


TP 40 - 90°
Serial No. Cylinder bore Rotation angle
TP Rotating unit Rotation angle 90°
Rotation angle 180°

Magnetic proximity sensor

MZC2-1V7NS-FU0	Magnetic, NPN, 3-core3m
MZC2-1V7PS-FU0	Magnetic, PNP, 3-core3m

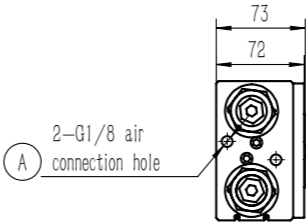
*Two sensors are required for each rotation unit. For the detailed monitoring of two positions, see the sensor appendix.



Product attributes	Parameter Value	Unit
Product Code	TP40	
Cylinder bore	40	mm
Theoretical torque	4.02 × P	N·m
Rotation angle	90/180	°
Adjustment range of rotation angle	± 30	°
Product weight	5.85	kg
Allowable rotation time	1~3	s
Rotation time	0.9~3	sec
Maximum allowable kinetic energy	12	J
Sensor type	Magnetic proximity sensor	

P: Compressed air pressure [bar]

Specification of buffer unit	M25 Hydraulic buffer	Specification of air connection port	G1/8
Repeated gripping accuracy/mm	± 0.05	Temperature range of application/°C	-5~60
Operating air pressure range/bar	3~8	IP rating	65



- ① ⑨ The pin bushing is of the standard version
② ③ ⑦ ⑧ are gripper mounting holes
① ④ ⑤ ⑥ ⑨ are gripper positioning holes
A Compressed air connection port
B Hydraulic buffer
C Adjustment knob for rotation limit
D Location of magnetic proximity sensor

Note:
1. To be used with the speed control valve
2. The figure shows the middle position of rotation, and the gripper needs to be selected additionally.
3. The output torque at the end position of rotation is half of the rated torque and is changed to the external limit to output the rated torque at the end position.