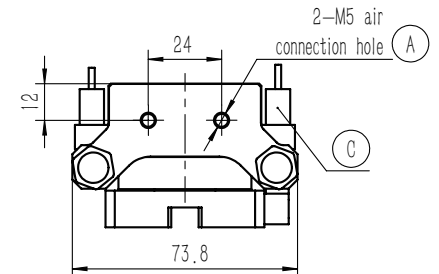
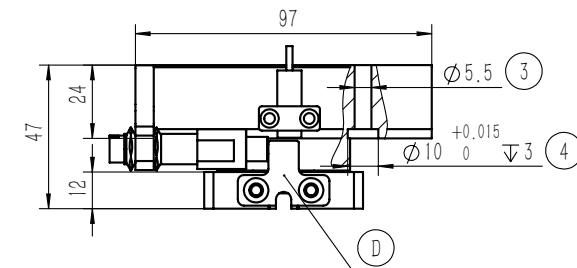
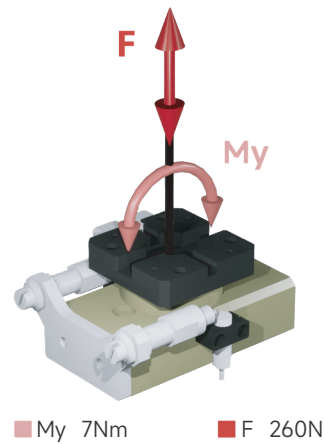
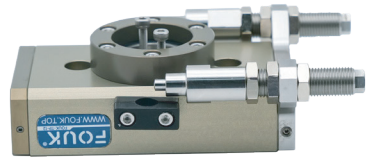


Rotary unit series FOUK-TF

TP12

TP12

Static load-bearing torque



TP 12 - 180

Serial No.

TP	Rotating unit
----	---------------

Cylinder bore

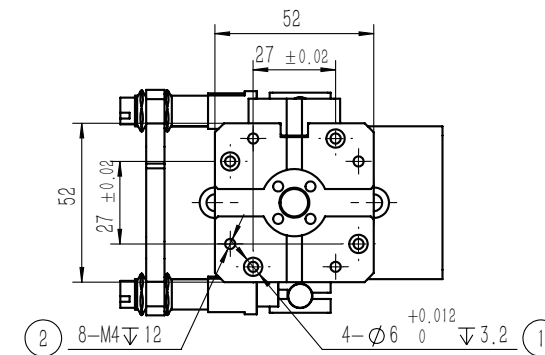
Rotation angle

Rotation angle	90°
Rotation angle	180°

Inductive proximity sensor

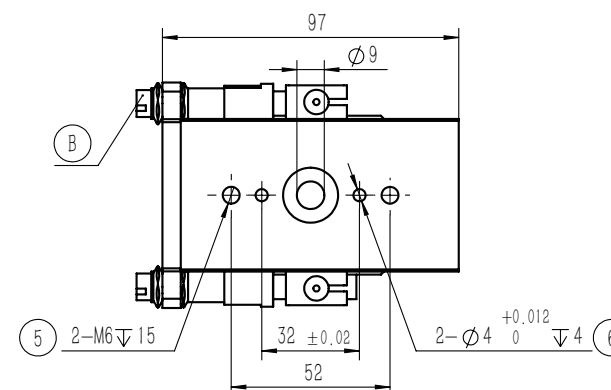
IPSD-2NS-0823-L3	Inductive, NPN, 3-core3m
IPSD-2PS-0823-L3	Inductive, PNP, 3-core3m

*Two sensors are required for each rotation unit. For the detailed monitoring of two positions, see the sensor appendix.



☐ ② ☐ ③ ☐ ⑤ are gripper mounting holes
☐ ① ☐ ④ ☐ ⑥ are gripper positioning holes
☐ (A) Compressed air connection port
☐ (B) Hydraulic buffer
☐ (C) Location of inductive proximity sensor
☐ (D) Hard limit

Product attributes	Parameter Value		Unit
Product Code	TP12		
Cylinder bore	12		mm
Theoretical torque	0.13 × P		N·m
Rotation angle	180		°
Product weight	0.65		kg
Allowable rotation time	0.8~2		s
Rotation time	0.4~2		sec
Maximum allowable kinetic energy	0.3		J
Sensor type	Inductive proximity sensor		
P: Compressed air pressure [bar]			
Specification of buffer unit	M10 Hydraulic buffer	Specification of air connection port	M5
Repeated gripping accuracy/mm	± 0.05	Temperature range of application/°C	-5~60
Operating air pressure range/bar	3~7	IP rating	65



Note:

1. To be used with the speed control valve
2. The figure shows the middle position of rotation, and the gripper needs to be selected additionally.
3. The output torque at the end position of rotation is half of the rated torque and is changed to the external limit to output the rated torque at the end position.